



DLF/DLH0625

6.5" TFT LCD, LED Backlight 1000nits,VGA

DLF/DLH0625 TFT LCD monitor, built-in 1000 nits high brightness for sunlight readable display. It offers the best visibility, performance and cost effective value. The high level of brightness together with the optimal contrast ratio renders high quality images and enhances legibility. With its fast response time and LED backlight technology, the monitor brings remarkable display quality and durability for your applications. Suitable for marine, military, medical, and industrial application.

Key Features

- Sunlight Readable
- LED Backlight
- High Shock & Vibration Resistance
- Low Power Consumption
- Wide Temperature. Range
- High Uniformity
- Low EMI Noise
- Wide Dimming
- Life Expectancy
- Panel Operation Temperature: -30°C ~80°C



Specifications

V1

Model No.	DLF0625	DLH0625
Description	6.5" TFT LCD monitor, LED Backlight 1000 nits, VGA	
Backlight	LED Backlight	
Display Area (mm)	132.48 x 99.36 mm	
Brightness	1,000 cd/m ²	
Resolution	640 x480 (VGA)	
Contrast Ratio	600 : 1	
Pixel Pitch (mm)	0.207(H) x 0.207(V)	
Viewing Angle	160°(H), 140°(V)	
Display Colors	16.2M colors	
Response Time (Typical)	25ms (Typical)	
Power Input	DC 12V	
Power Consumption	3.86W	
Dimensions (mm)	153x118x10.9mm	
Weight (Net)	0.2Kg	
Control Board (Optional)	<input type="checkbox"/> AD5621GA <input type="checkbox"/> AD5621GD <input type="checkbox"/> AD5766GDVA <input type="checkbox"/> AD2662GDVAR	
<input type="checkbox"/> AD5621GA	VGA+Audio	
<input type="checkbox"/> AD5621GD	VGA+DVI	
<input type="checkbox"/> AD5766GDVA	VGA+CVBS+S-Video+Audio (Optional DVI)	
<input type="checkbox"/> AD2662GDVAR	VGA+DVI (Optional CVBS / S-Video/ Component / Audio)	
OSD Control Button	<input type="checkbox"/> 5 Key <input type="checkbox"/> 4 Key	
<input type="checkbox"/> 5 Key	Power Switch, Menu, Select (+,-), Auto	
<input type="checkbox"/> 4 Key	Power Switch, Menu, Select (+,-),	
OSD Menu	Brightness, Contrast, H/V Position, Color, Phase, Clock...	
Optional	<input type="checkbox"/> AOT <input type="checkbox"/> Touch Screen <input type="checkbox"/> Waterproof	

Specifications are subject to change without notice.

All brands or product names are trademarks or registered trademarks of their respective companies.

DLF= Panel+LED Driving Board

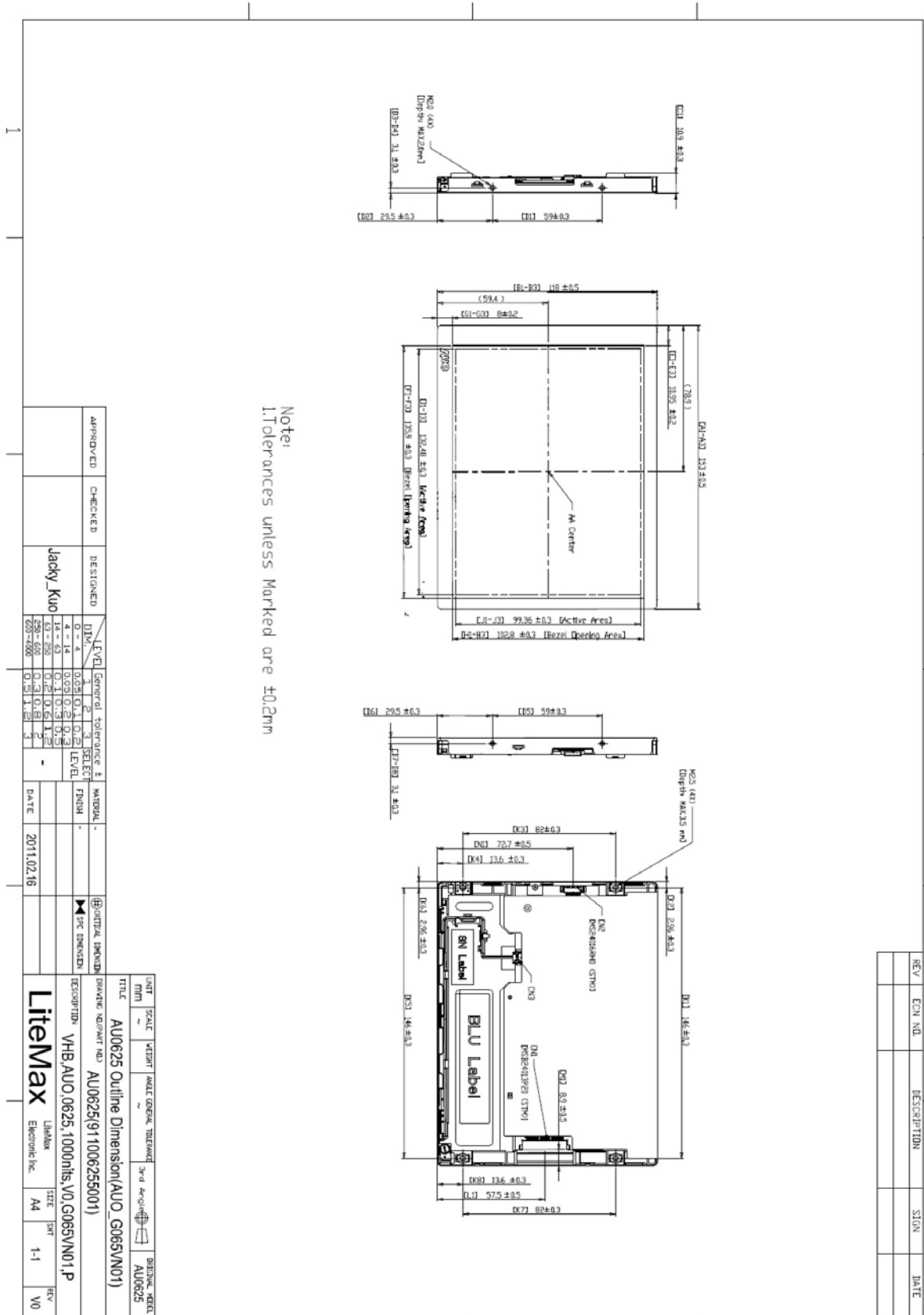
DLH= Panel+LED Driving Board+Control Board



Mechanical Drawing

Outline Dimensions

Unit:mm





Ordering Information

Part Number	Description
DLF0625-ENN-A01	6.5",1000nits,VGA.V01(5 in 1)
DLH0625-ENN-A01	6.5",1000nits,VGA,AD5621G.V01(5 in 1)

Optional Accessories

Part Number	Description
840612031100	ADAPTER.12V.3.33A.40W,PAA040F,P
810618301010	CABLE.POWER.AC.1830mm USA type
810618301090	CABLE,POWER,AC,1830mm Europe type
810618301050	CABLE.POWER.AC.1830mm UK type
810618301170	CABLE.POWER,AC,1830mm Australia type
810618301030	CABLE.POWER.AC.1830mm Japan type