



**DLF1068 / DLH1068**  
**10.4" TFT LCD, LED Backlight 1600nits,SVGA**

10.4" TFT LCD panel, built-in 1600 nits high bright for sunlight readable LCD display, high transmittance color filter, high transmission polarizing plates, Low Power Consumption, suitable for kiosk, advertising, POS, marine, transportation, gaming, studio display, gas pump.

**Key Features**

- Sunlight Readable
- LED Backlight
- High Shock & Vibration Resistance
- Low Power Consumption
- Wide Operation Temperature. (-20°C~ 60°C)
- High Uniformity
- Low EMI Noise
- Wide Dimming
- Life Expectancy



**Specifications**

V2

Model No.	DLF1068	DLH1068
Description	10.4" TFT LCD, LED Backlight 1600 nits, SVGA	
Display Area (mm)	210.2 (H) x 158.4(V) mm	
Brightness	1,600 cd/m <sup>2</sup>	
Resolution	800 x 600 (SVGA)	
Contrast Ratio	400 : 1	
Pixel Pitch (mm)	0.264(H) x 0.264(V)	
Viewing Angle	+65°~-65°(H), +45°~-65°(V)	
Display Colors	262K	
Response Time (Typical)	25ms (Typical)	
Sync	LVDS	
Power Consumption	5.7W	11.4W
Dimensions (mm)	236(W) x 176.9(H) x 5.6(D)mm	
Weight (Net)	0.3Kg	
LED Driving Board	LID10A	
Control Board (Optional)	<input type="checkbox"/> AD5621GA <input type="checkbox"/> AD5621GD <input type="checkbox"/> AD5766GDVA <input type="checkbox"/> AD2662GDVAR	
<input type="checkbox"/> AD5621GA	VGA+Audio	
<input type="checkbox"/> AD5621GD	VGA+DVI	
<input type="checkbox"/> AD5766GDVA	VGA+CVBS+S-Video+Audio (Optional DVI)	
<input type="checkbox"/> AD2662GDVAR	VGA+DVI (Optional S-Video/ Component / Audio)	
F / R Control Button	<input type="checkbox"/> 5 Key <input type="checkbox"/> 4 Key	
<input type="checkbox"/> 5 Key	Power Switch, Menu, Select (+,-), Auto	
<input type="checkbox"/> 4 Key	Power Switch, Menu, Select (+,-),	
OSD Menu	Brightness, Contrast, H/V Position, Color, Phase, Clock...	
Optional	<input type="checkbox"/> AOT <input type="checkbox"/> Touch Screen	

*Specifications are subject to change without notice.  
 All brands or product names are trademarks or registered trademarks of their respective companies.*

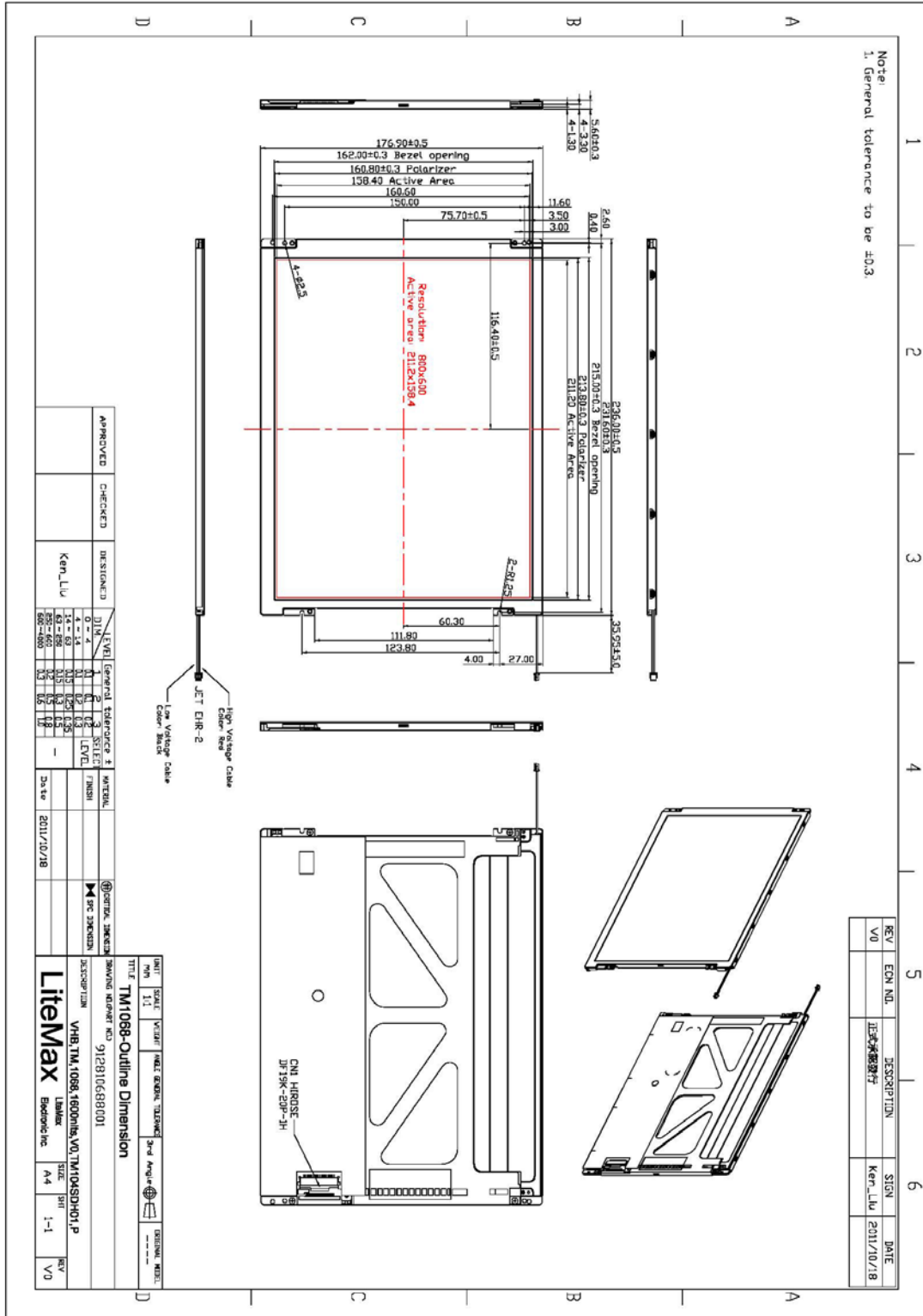
**DLF**= Panel+LED Driving Board  
**DLH**= Panel+LED Driving Board+Control Board



# Mechanical Drawing

## Outline Dimensions

Unit:mm





### Ordering Information

Model Name	Description
<b>DLF1068-ENN-A01</b>	10.4",1600nits,SVGA,LID10A09,V01
<b>DLH1068-ENN-A01</b>	10.4",1600nits,SVGA,LID10A09,AD5621GA,V01

### Optional Accessories

Part Number	Description
<b>840612051100</b>	ADAPTER.12V.5A.60W.EA1050A,P
<b>810618301010</b>	CABLE.POWER.AC.1830mm USA type
<b>810618301090</b>	CABLE,POWER,AC,1830mm Europe type
<b>810618301050</b>	CABLE.POWER.AC.1830mm UK type
<b>810618301170</b>	CABLE.POWER,AC,1830mm Australia type
<b>810618301030</b>	CABLE.POWER.AC.1830mm Japan type
<b>800901505000</b>	CABLE,OTHER,LED,150mm,28AWG,1.5mm 2P connector to 1.5mm 2P connector, P