



## DLF\_DLH1506-S

### 15" TFT LCD, LED Backlight 1000nits,XGA(1024x768)

15" TFT LCD panel, built-in 1000 nits high bright for sunlight readable LCD display, high transmittance color filter, high transmission polarizing plates, Low Power Consumption, suitable for kiosk, advertising, POS, marine, transportation, gaming, studio display, gas pump.

#### Key Features

- Ultra Brightness: 1000nits
- LED Backlight
- High Shock & Vibration Resistance
- Low Power Consumption
- High Uniformity
- Low EMI Noise
- Wide Viewing Angle
- Wide Operation temperature
- Life Expectancy



### Specifications

V1

Model No.	DLF1506-S	DLH1506-S
Description	15" TFT LCD, LED Backlight 1000nits,XGA(1024x768)	
Display Area (mm)	304.1(H) x 228.1(V) mm	
Brightness	1000 cd/m <sup>2</sup>	
Resolution	1024x768 (XGA)	
Contrast Ratio	1700 : 1	
Pixel Pitch (mm)	0.297(H) x 0.297(V)	
Viewing Angle	85°~85°(H), 85°~85°(V)	
Display Colors	16.7M	
Response Time (Typical)	35ms	
Power Consumption	13W	17 W
Dimensions (mm)	326.5 x 253.5 x 9.5 (mm)	
Weight (Net)	1kg	1.1kg
LED Driving Board	LID15B	
Control Board (Optional)	<input type="checkbox"/> AD6038GD	
<input type="checkbox"/> AD6038GD	VGA+DVI	
Control Button	<input type="checkbox"/> 4 Key	
<input type="checkbox"/> 4 Key	Power Switch, Menu, Select (+,-),	
OSD Menu	Brightness, Contrast, H/V Position, Color, Phase, Clock...	
Optional	<input type="checkbox"/> AOT <input type="checkbox"/> Touch Screen	

*Specifications are subject to change without notice.*

*All brands or product names are trademarks or registered trademarks of their respective companies.*

**DLF**= Panel+LED Driving Board

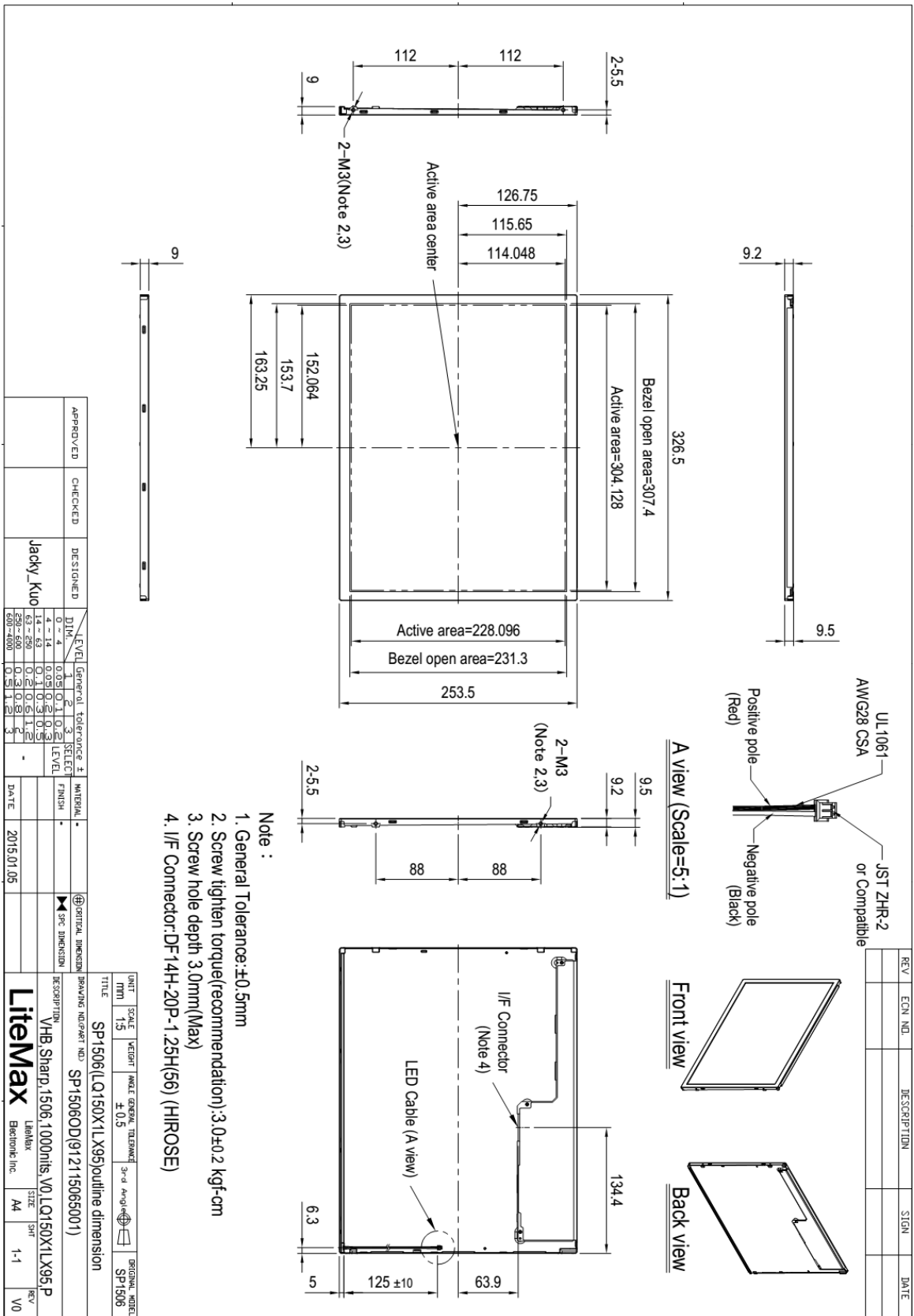
**DLH**= Panel+LED Driving Board+Control Board



# Mechanical Drawing

## Outline Dimensions

Unit:mm





### Ordering Information

Part Number	Description
<b>DLF1506-SNN-A01</b>	15",1000nits,XGA,LID15B,1in1,V01
<b>DLF1506-SNN-A02</b>	15",1000nits,XGA,LID15B,5in1,V01
<b>DLH1506-SNN-I01</b>	15",1000nits,XGA,LID15B,AD6038GD,DC12V,1in1,V01
<b>DLH1506-SNN-I02</b>	15",1000nits,XGA,LID15B,AD6038GD,DC12V,5in1,V01

### Optional Accessories

Part Number	Description
<b>840612031101</b>	ADAPTER.12V.3.33A.40W.G99-KPL040F-N051.DC Plug 2.1*5.5,P
<b>810618301010</b>	CABLE.POWER.AC.1830mm USA type
<b>810618301090</b>	CABLE,POWER,AC,1830mm Europe type
<b>810618301050</b>	CABLE.POWER.AC.1830mm UK type
<b>810618301170</b>	CABLE.POWER,AC,1830mm Australia type
<b>810618301030</b>	CABLE.POWER.AC.1830mm Japan type