



DLF1968 V1 / DLH1968 V1
19" TFT LCD, LED Backlight 1600nits,SXGA(1280x1024)

19" TFT LCD panel, built-in 1600 nits brightness for sunlight readable LCD display, high transmittance color filter, high transmission polarizing plates, Low Power Consumption, suitable for kiosk, advertising, POS, marine, transportation, gaming, studio display, gas pump.

Key Features

- Brightness: 1600nits
- LED Backlight
- SXGA(1280x1024) High Definition
- High Shock & Vibration Resistance
- Low Power Consumption
- High Uniformity
- Low EMI Noise
- Wide Dimming
- Life Expectancy



Specifications

V3

Model No.	DLF1968 V1	DLH1968 V1
Description	19" TFT LCD, LED Backlight ,1600nits,SXGA(1280x1024)	
Display Area (mm)	376.3(H) x 301.1(V)mm	
Brightness	1600 cd/m ²	
Resolution	1280x1024 (SXGA)	
Contrast Ratio	1000 : 1	
Pixel Pitch (mm)	0.294(H) x 0.294(V)	
Viewing Angle	+85°~ -85°(H), +80°~ -80°(V)	
Display Colors	16.7M	
Response Time (Typical)	5ms	
Power Consumption	28W	31W
Dimensions (mm)	396x324.0x14.5mm	
Weight (Net)	2.4kg	2.45kg
LED Driving Board	LID19A09	
Control Board (Optional)	<input type="checkbox"/> AD6038GA <input type="checkbox"/> AD6038GD <input type="checkbox"/> AD2662GDVAR <input type="checkbox"/> AD2662GDHMVAR	
	<input type="checkbox"/> AD6038GA	VGA+Audio
	<input type="checkbox"/> AD6038GD	VGA+DVI
	<input type="checkbox"/> AD2662GDVAR	VGA+DVI (Optional S-Video/ Component / Audio)
	<input type="checkbox"/> AD2662GDHMVAR	VGA (Optional DVI-D / HDMI / S-Video/ Component / Audio)
F / R Control Button	<input type="checkbox"/> 5 Key <input type="checkbox"/> 4 Key	
	<input type="checkbox"/> 5 Key	Power Switch, Menu, Select (+,-), Auto
	<input type="checkbox"/> 4 Key	Power Switch, Menu, Select (+,-),
OSD Menu	Brightness, Contrast, H/V Position, Color, Phase, Clock...	
Optional	<input type="checkbox"/> AOT <input type="checkbox"/> Touch Screen	

Specifications are subject to change without notice.
 All brands or product names are trademarks or registered trademarks of their respective companies.

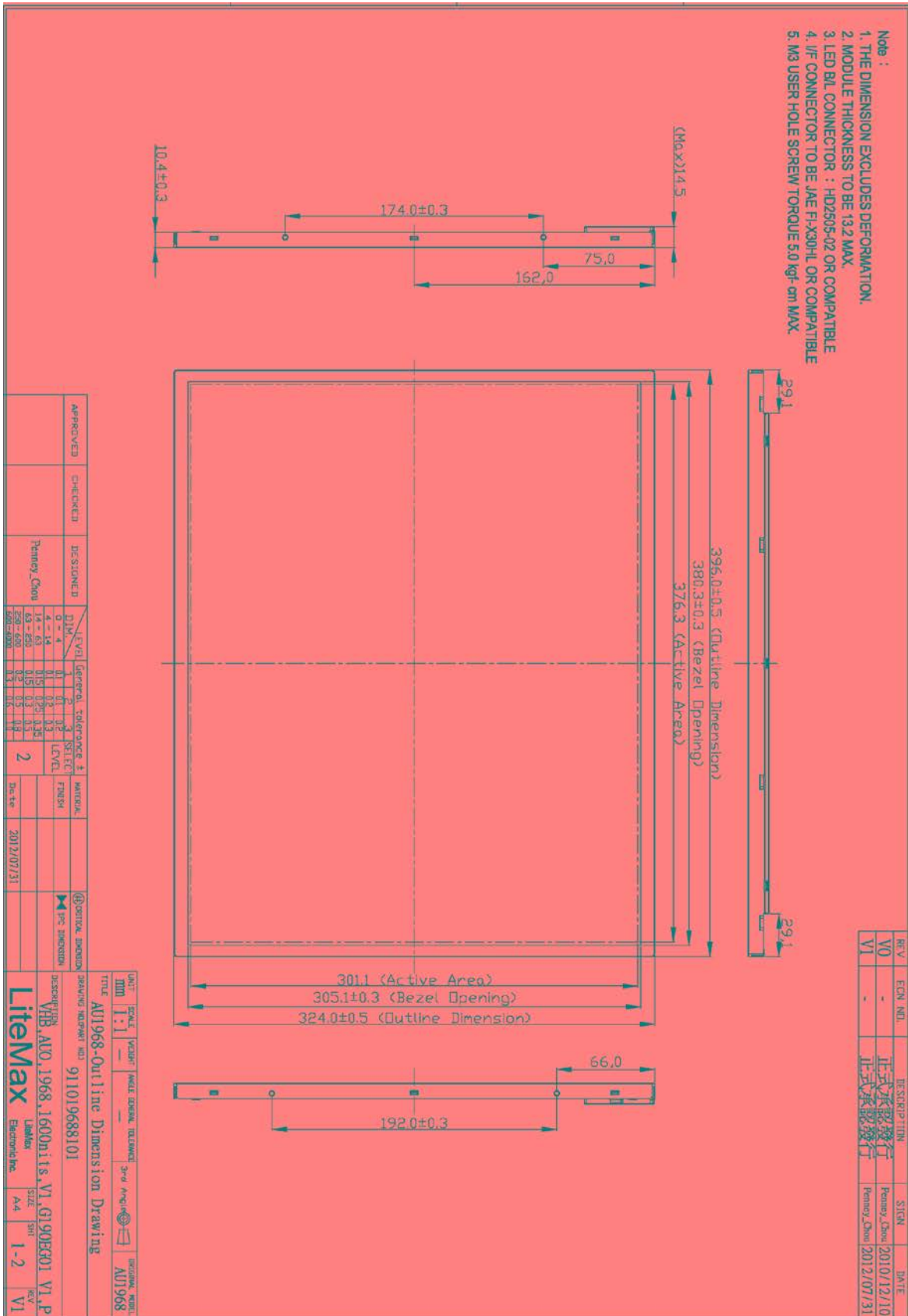
DLF= Panel+LED Driving Board
DLH= Panel+LED Driving Board+Control Board



Mechanical Drawing

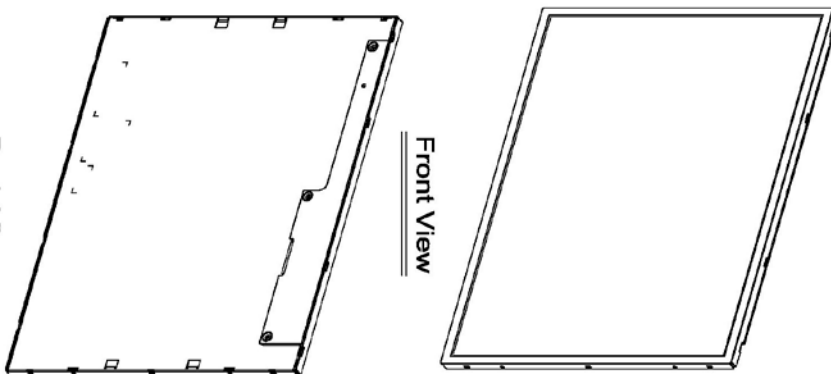
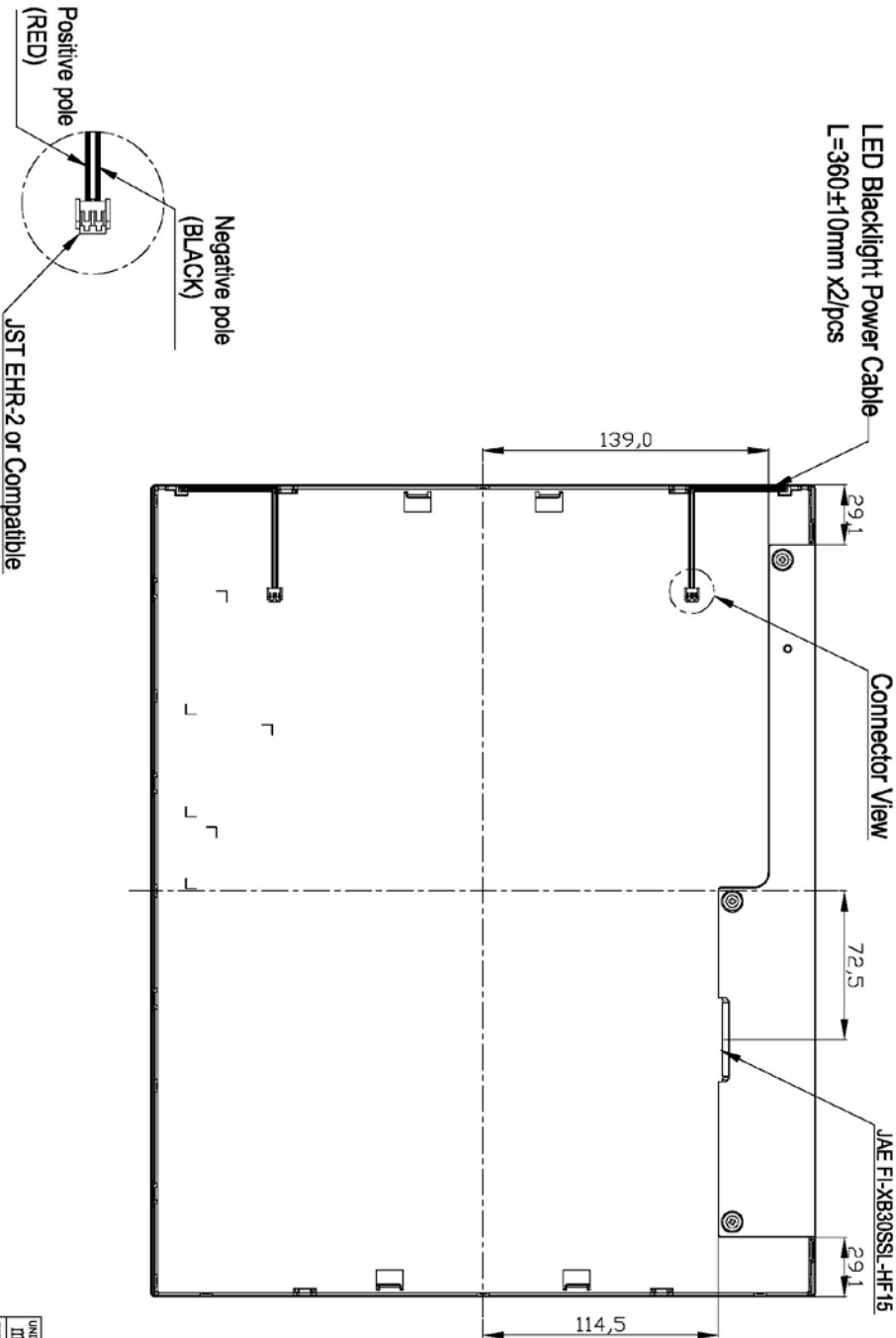
Outline Dimensions

Unit:mm





- Note :
1. THE DIMENSION EXCLUDES DEFORMATION.
 2. MODULE THICKNESS TO BE 13.2 MAX.
 3. LED B/L CONNECTOR : HD2505-02 OR COMPATIBLE
 4. I/F CONNECTOR TO BE JAE FI-X30HL OR COMPATIBLE
 5. M3 USER HOLE SCREW TORQUE 5.0 kgf-cm MAX.



REV	ECN NO.	DESCRIPTION	SIGN	DATE
V0	-	正承認発行	Penney_Chou	2010/12/10
V1	-	正承認発行	Penney_Chou	2012/07/31

APPROVED	CHECKED	DESIGNED	LEVEL	General tolerance ±	SELECT LEVEL	MATERIAL	SPEC DIMENSION
		Penney_Chou	0 ~ 4	0.1	0.1		
			4 ~ 14	0.1	0.2		
			14 ~ 63	0.15	0.25		
			63 ~ 250	0.2	0.3		
			250 ~ 630	0.2	0.5		
			630 ~ 1000	0.3	0.8		

UNIT	SCALE	WEIGHT	ANGLE	GENERAL TOLERANCE	3rd ANGLE	ORIGIN	MODEL
mm	1:1	-	-	-	☑		AU1968

TITLE: AU1968-Outline Dimension Drawing
DRAWING NO./PART NO.: 911019688101

DESCRIPTION: VHB, AUO, 1968, 1600hits, V1, G190EG01 V1, P
LitexMax
Electronic Inc.

SIZE: A4
SHEET: 2-2
REV: V1



Ordering Information

Part Number	Description
DLF1968-ENN-A11	19",1600nits,SXGA,LID19A09.V01(5 in 1)
DLH1968-ENN-G11	19",1600nits,SXGA,LID19A09.AD2662GD,V01(5 in 1)

Optional Accessories

Part Number	Description
840612051210	ADAPTER,AC/DC,12V/5.4A,65W,Atech OEM A065112-TDx.4P,P
810618301010	CABLE.POWER.AC.1830mm USA type
810618301090	CABLE,POWER,AC,1830mm Europe type
810618301050	CABLE.POWER.AC.1830mm UK type
810618301170	CABLE.POWER,AC,1830mm Australia type
810618301030	CABLE.POWER.AC.1830mm Japan type