



DLF2415 / DLH2415

24" TFT LCD, LED Backlight 1000nits,FHD(1920x1080)

24" TFT LCD panel, built-in 1000 nits high bright for sunlight readable LCD display, high transmittance color filter, high transmission polarizing plates, Low Power Consumption, suitable for kiosk, advertising, POS, marine, transportation, gaming, studio display, gas pump.

Key Features

- Sunlight Readable
- LED Backlight
- FHD(1920x1080) High Definition
- High Shock & Vibration Resistance
- Low Power Consumption
- High Uniformity
- Low EMI Noise
- Wide Dimming
- Life Expectancy



Specifications

V1

Model No.	DLF2415	DLH2415
Description	24" TFT LCD, LED Backlight 1000nits,FHD(1920x1080)	
Display Area (mm)	531.4 x 298.9 mm	
Brightness	1000 cd/m ²	
Resolution	1920x1080 (FHD)	
Contrast Ratio	1000 : 1	
Pixel Pitch (mm)	0.276(H) x 0.276(V)	
Viewing Angle	+85°~-85°(H), +80°~-80°(V)	
Display Colors	16.7M	
Response Time (Typical)	5ms	
Sync	LVDS	
Power Consumption	30W / 38W	
Dimensions (mm)	555.9x323.3x14.6 mm	
Weight (Net)	2.67kg	
LED Driving Board	LID 24A	
Control Board (Optional)	<input type="checkbox"/> AD2662GD <input type="checkbox"/> AD2662GDVAR <input type="checkbox"/> AD2662GD VGA+DVI <input type="checkbox"/> AD2662GDVAR VGA+DVI (Optional S-Video/ Component / Audio)	
F / R Control Button	<input type="checkbox"/> 4 Key <input type="checkbox"/> 4 Key Power Switch, Menu, Select (+,-),	
OSD Menu	Brightness, Contrast, H/V Position, Color, Phase, Clock...	
Optional	<input type="checkbox"/> AOT <input type="checkbox"/> Touch Screen	

Specifications are subject to change without notice.

All brands or product names are trademarks or registered trademarks of their respective companies.

DLF= Panel+LED Driving Board

DLH= Panel+LED Driving Board+Control Board

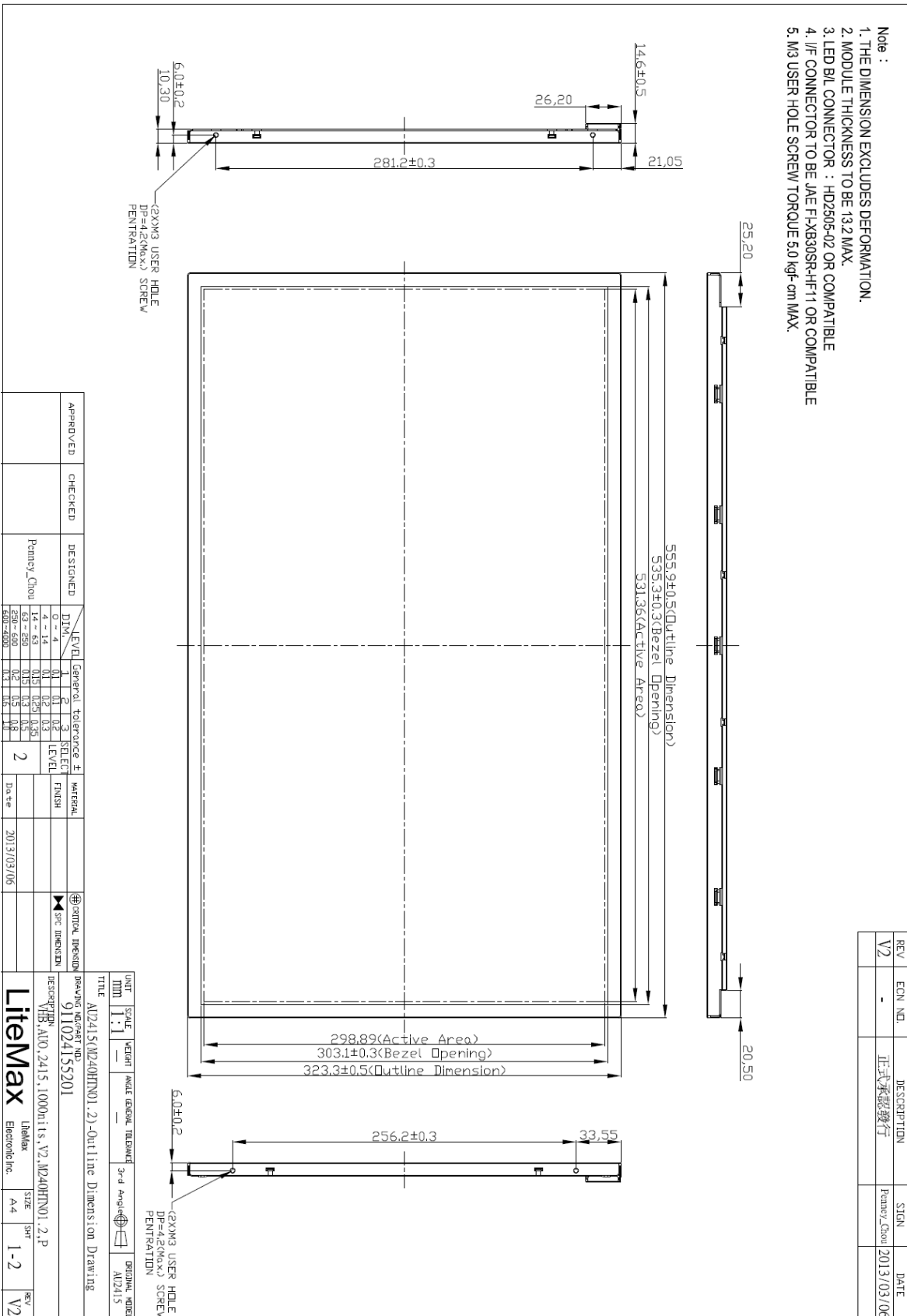


Mechanical Drawing

Outline Dimensions

Unit:mm

- Note :
1. THE DIMENSION EXCLUDES DEFORMATION.
 2. MODULE THICKNESS TO BE 13.2 MAX.
 3. LED B/L CONNECTOR : HD2605-02 OR COMPATIBLE
 4. I/F CONNECTOR TO BE JAE F-HXB30SR-HF-11 OR COMPATIBLE
 5. M3 USER HOLE SCREW TORQUE 5.0 kgf-cm MAX.



REV	ECN NO.	DESCRIPTION	SIGN	DATE
V2	-	正式承認発行	Penny_Chou	2013/03/06

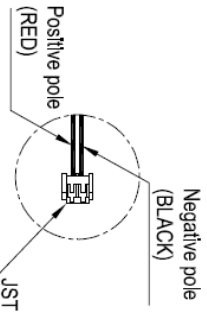
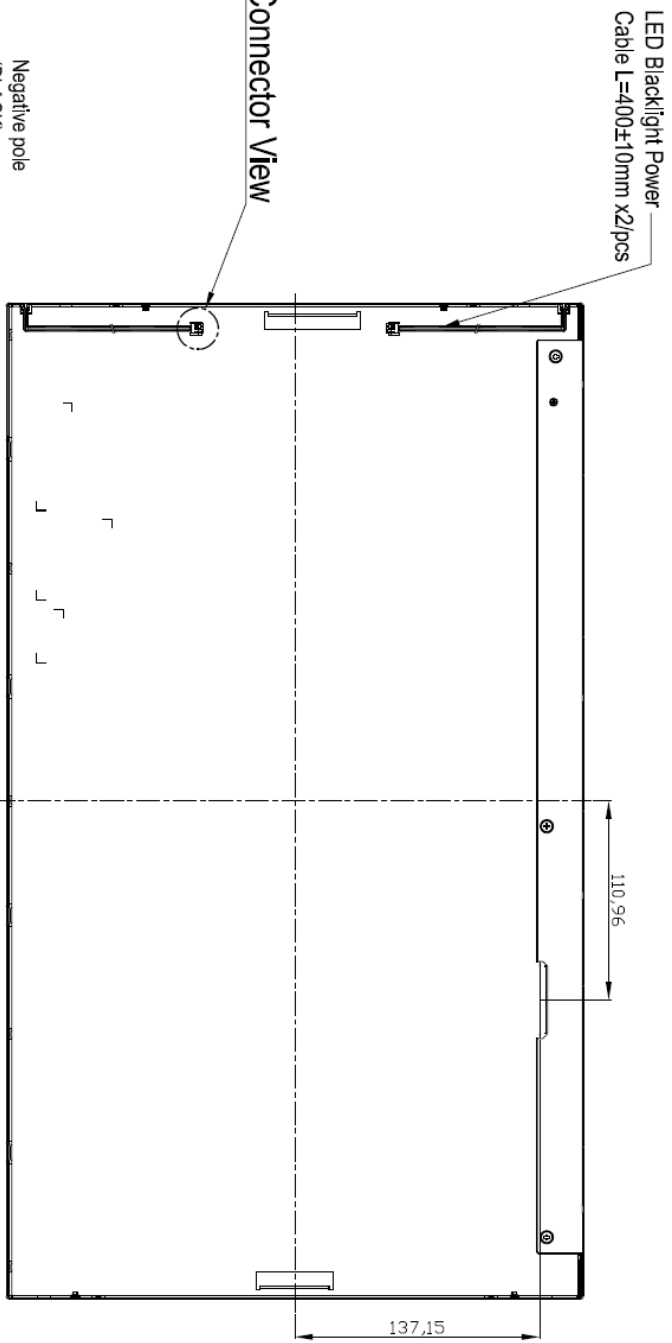
APPROVED	CHECKED	DESIGNED	DWG	LEVEL	General tolerance ±	SELECT LEVEL	MATERIAL	FINISH	DATE
		Penny_Chou		2	0-4 4-14 14-50 50-60 60-200	1 0.1 0.15 0.2 0.3			2013/03/06

UNIT	SCALE	VECTOR	HAZARD SYMBOL	TOLERANCE	3rd Angle	ORIGINAL MODEL
mm	1:1					AU2415
TITLE						
AU2415(M240HTN01.2)-Outline Dimension Drawing						
REVISING NO. 911024155201						
DESCRIPTION						
VHS-A100.2415.1000units_V2_M240HTN01.2.P						
Litemax						
Lithelux Electronic Inc.						
SIZE	A4	SHEET		1-2		REV
						V2



REV	ECN NO.	DESCRIPTION	SIGN	DATE
V2	-	正式承認發行	Penney-Chou	2013/03/06

- Note :
1. THE DIMENSION EXCLUDES DEFORMATION.
 2. MODULE THICKNESS TO BE 13.2 MAX.
 3. LED B/L CONNECTOR : HD2505-02 OR COMPATIBLE
 4. I/F CONNECTOR TO BE JAE FI-XB30SR-HF11 OR COMPATIBLE
 5. M3 USER HOLE SCREW TORQUE 5.0 kgf-cm MAX.



Connector View

LEVEL	General	Tolerance ±	MATERIAL
0 - 4	0.1	0.2	
4 - 14	0.15	0.3	
14 - 63	0.25	0.35	
63 - 250	0.5	0.5	
250 - 630	1.0	1.0	
630 - 800	1.5	1.5	

UNIT	SCALE	WEIGHT	ANGLE	GENERAL TOLERANCE	3rd Angle	DRAGON MODEL
MM	1 : 1	-	-	-	☑	AU2415

TITLE: AU2415(M240HTN01-2)-Outline Dimension Drawing

DRAWING NO./PART NO.: 911024155201

DESCRIPTION: V2H, AU0.2415, 1000units, V2, M240HTN01-2-P

LiteMax LithMax Electronic Inc.

SIZE: A4
SHEET: 2-2
REV: V2

APPROVED	CHECKED	DESIGNED	DATE
		Penney, Chou	2013/03/06



Ordering Information

Part Number	Description
DLF2415-ENN-A01	24", 1000nits, FHD(1920*1080), LID24, V01
DLH2415-ENN-G01	24", 1000nits, FHD(1920*1080), AD2662GDVAR, LID24, V01

Optional Accessories

Part Number	Description
840612051100	ADAPTER.12V.5A.60W.EA1050A,P
810618301010	CABLE.POWER.AC.1830mm USA type
810618301090	CABLE,POWER,AC,1830mm Europe type
810618301050	CABLE.POWER.AC.1830mm UK type
810618301170	CABLE.POWER,AC,1830mm Australia type
810618301030	CABLE.POWER.AC.1830mm Japan type