

HDW043_A5001L

4.3 Inch, 480*RGB*800, 16.7M Colors, IPS screen

Capacitive touch, With shell, HDMI interface display



● Display

Item	Parameter	Description
Color	16.7M(16777216)colors	24 bit color 8R8G8B
Panel Type	IPS	IPS TFT LCM ,wide viewing angle
Viewing Angle	85/85/85/85 (L/R/U/D)	Best View: symmetrical
Active Area (A.A.)	93.20mm (W) ×55.76mm (H)	480×800
View Area (V.A.)	93.20mm (W) ×55.76mm (H)	480×800
Resolution	480×800	Support 0°/90°/180°/270°rotated display
Backlight	LED	≥20000H (Continuous working with maximum brightness, time of the brightness decays to 50%)
Brightness	250nit	-

Note: You can use dynamic screen saver wallpapers to avoid afterimages caused by fixed page display for a long time.

● Voltage & Current

Item	Descriptions	
Power Voltage	12~36V, typical value of 12V	
Current parameters	120mA	VCC=12V (Minimum starting voltage)
	120mA	VCC=12V (Standard supply voltage)
	80mA	VCC=36V (Maximum supply voltage)

Recommended power supply: 12V 1A DC

● Reliability Test

Item	Conditions	Min	Typ	Max	Unit
Working Temperature	60%RH at 12V voltage	-10	25	60	℃
Storage Temperature	-	-20	25	70	℃
Working Humidity	25℃	10%	60%	90%	RH
ESD	Air discharge ±4KV				
Protective Level	IP65(Front)				

● Interface

Item	Descriptions
Socket	12~36V power interface, HDMI interface, USB interface
USB Interface	Yes (Connect USB Capacitive touch screen)
SD Card Slot	None

● Peripheral

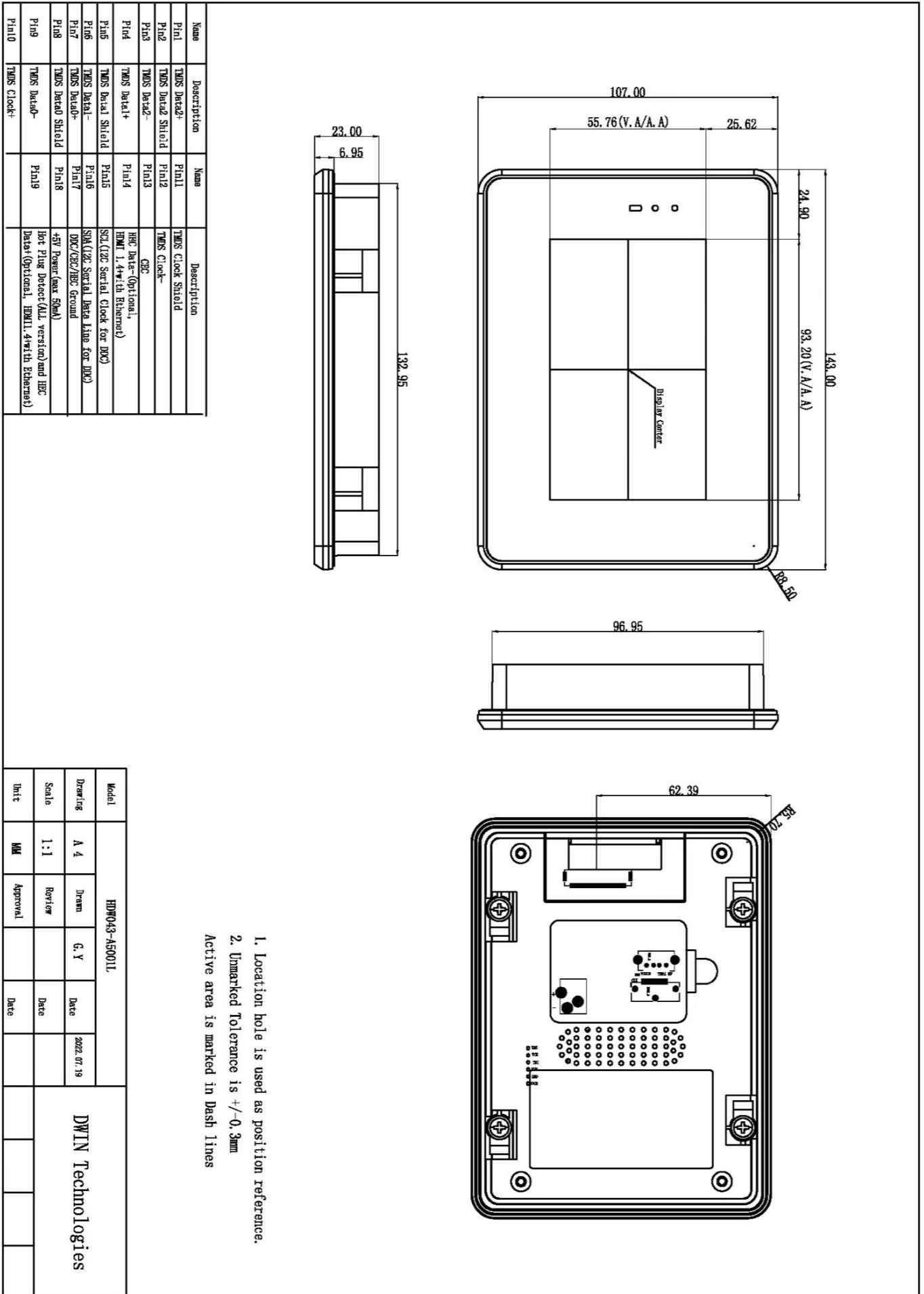
Peripheral	Capacitive touch panel
------------	------------------------

● Packing Capacity & Dimension

Dimension				
Dimension	143.0(W)*107.0(H)*23.0(T)mm			
Net Weight	280g			
Packing Capacity				
Model	Size	Layer	Quantity/Layer	Quantity(Pcs)
Carton1:	220mm(L)*160mm(W)*47mm(H)	1	1	1
Carton2:	250mm(L)*200mm(W)*80mm(H)	2	1	2
Carton3:	320mm(L)*270mm(W)*80mm(H)	2	2	4
Carton4:	450mm(L)*350mm(W)*300mm(H)	1	20	20
Carton5:	600mm(L)*450mm(W)*300mm(H)	1	34	34

Disclaimer:

- 1, The product design is subject to alternation and improvement without prior notice.
- 2, There are multiple parallel raw materials coexisting to guarantee the stable supply. If customers have particular raw material preferences or requirements, please contact the sales personnel.



Installation Schematic

Waterproof rubber gasket (blue part in the schematic, actually in black): located between screen and shell to prevent water ingress. Additional glass glue is available for outdoor use to strengthen the waterproof performance

1

The opening requirements are shown in the figure.
Depth >18.0mm
Device front housing thickness <3.0mm

Install the screen from the front into the housing openings.

2

Loosen the screw, the snap automatically follows the screw to rotate 90° clockwise.

State before rotation

Lock the 4 screws to fix the product on the housing

State after rotation

3

Clip the back cover of the housing

Installation completed

The final effect

Record of Revision

Ver	Revise Date	Content	Editor
00	2022-12-05	First Edition	Kaya
01	2024-05-13	Update Temperature Range	YML

Please contact us if you have any questions about the use of this document or our products, or if you would like to know the latest information about our products:

Customer service Tel: +86-400-018-9008

Customer service E-mail: dwinhmi@dwin.com.cn

Website: www.dwin-global.com

DWIN Developer Forum: <https://forums.dwin-global.com/index.php/forums>

Thank you all for continuous support of DWIN, and your approval is the driving force of our progress!

Important Disclaimer

DWIN reserves the right to make any changes to product designs without prior notice.

Customers should ensure strictly adhering to all the relevant standards and requirements during the product application process, including but not limited to functional safety, information security, and regulatory provisions. DWIN shall not bear any joint and several liability for any consequences that may arise from customers' adoption of DWIN products. In particular, for risks that may lead to significant property losses, environmental hazards, personal injury, or even death, especially in high-risk application areas such as military applications, flammable and explosive places, and life-saving medical equipment, customers should independently assess the risks and take corresponding preventive and protective measures. DWIN shall not bear any relevant responsibility.