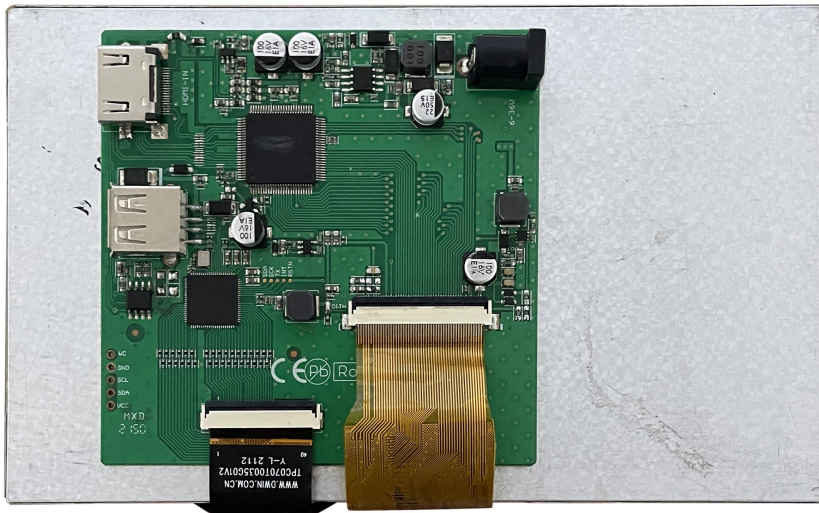


HDW070_008LZ01

7 Inch, 800×RGB×480, 16.7M Colors, TN screen

Capacitive Touch, HDMI interface display



Record of Revision

Ver	Revise Date	Content	Editor
00	2022-12-07	First Edition	Kaya

● Display

Item	Parameter	Description
Color	16.7M(16777216)colors	24 bit color 8R8G8B
Panel Type	TN	TN TFT LCM, normal viewing angle
Viewing Angle	70/70/50/70(L/R/U/D)	-
Active Area (A.A.)	154.08mm(W) ×85.92mm(H)	800x480
View Area (V.A.)	154.08mm(W) ×85.92mm(H)	800x480
Resolution	800x480	Support 0°/90°/180°/270°rotated display
Backlight	LED	≥20000H(Continuous working with maximum brightness, time of the brightness decays to 50%)
Brightness	800nit	-

Note:You can use dynamic screen saver wallpapers to avoid afterimages caused by fixed page display for a long time.

● Voltage & Current

Item	Description	
Power Voltage	6~36V, typical value of 12V	
Current parameters	640mA	VCC=6V (Minimum starting voltage)
	210mA	VCC=12V (Standard supply voltage)
	130mA	VCC=36V (Maximum supply voltage)

Recommended power supply: 12V 1A DC

● Reliability Test

Item	Conditions	Min	Typ	Max	Unit
Working Temperature	60%RH at 12V voltage	-20	25	70	℃
Storage Temperature	-	-30	25	80	℃
Working Humidity	25℃	10%	60%	90%	RH
Electrostatic discharge test	Contact discharge	-	±6KV	-	-
	Air discharge	-	±8KV	-	-
EFT		-	±2KV	-	-

● Interface

Item	Description
Socket	Power interface, HDMI interface
USB Interface	Yes (Connect USB capacitive touch screen)
SD Card Slot	None

● Peripheral

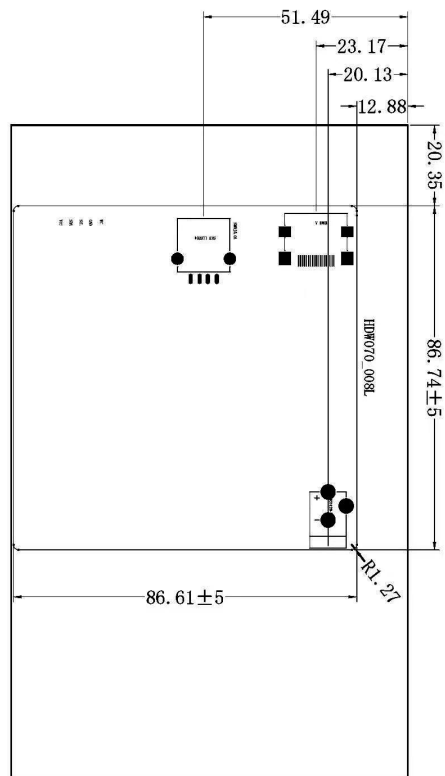
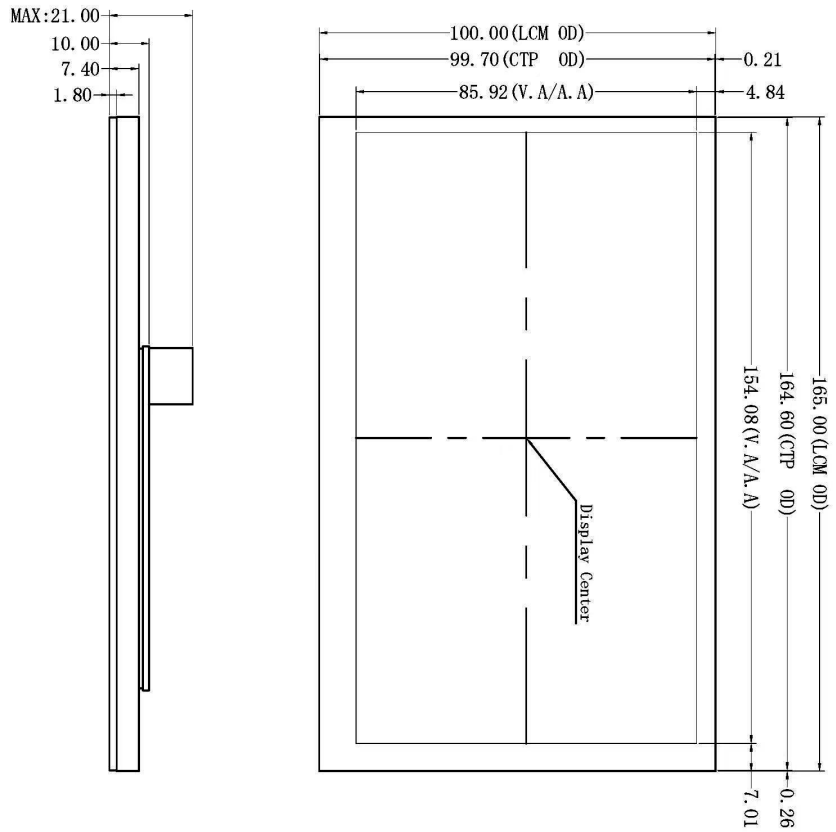
Peripheral	Capacitive touch panel
------------	------------------------

● Packing Capacity & Dimension

Dimension				
Dimension	165.0(W)×100.0(H)×18.7(T)mm			
Net Weight	245g			
Packing Capacity				
Model	Size	Layer	Quantity/Layer	Quantity(Pcs)
Carton1:	220mm(L)×160mm(W)×47mm (H)	-	-	-
Carton2:	250mm(L)×200mm(W)×80mm (H)	2	1	2
Carton3:	320mm(L)×270mm(W)×80mm (H)	2	2	4
Carton4:	450mm(L)×350mm(W)×300mm(H)	1	20	20
Carton5:	600mm(L)×450mm(W)×300mm(H)	1	34	34

Disclaimer:

- 1, The product design is subject to alternation and improvement without prior notice.
- 2, There are multiple parallel raw materials coexisting to guarantee the stable supply. If customers have particular raw material preferences or requirements, please contact the sales personnel.



HDWT	HDWT	HDWT	HDWT
Pin1	TMS Data2+	Pin11	TMS Clock Shield
Pin2	TMS Data2 Shield	Pin12	TMS Clock-
Pin3	TMS Data2-	Pin13	CEC
Pin4	TMS Data1+	Pin14	HBC Data- (Optional, I2C 1-wire Bitstream)
Pin5	TMS Data1 Shield	Pin15	SCL (I2C Serial Clock for I2C)
Pin6	TMS Data1-	Pin16	SDA (I2C Serial Data Line for I2C)
Pin7	TMS Data0+	Pin17	DDC/CEC/HBC Ground
Pin8	TMS Data0 Shield	Pin18	+5V Power (max 50mA)
Pin9	TMS Data0-	Pin19	Hot Plug Detect (All versions) and HBC Data- (Optional, I2C 1-wire Bitstream)
Pin10	TMS Clock+		

1. Location hole is used as position reference.
 2. Unmarked Tolerance is +/-0.3mm
- Active area is marked in Dash lines

Model				HDW070-008LZ01			
Drawing	A 4	Drawn	J.G	Date	2022.04.12	DWIN Technologies	
Scale	1:1	Review		Date			
Unit	MM	Approval		Date			



Please contact us if you have any questions about the use of this document or our products, or if you would like to know the latest information about our products:

Customer service Tel: +86-400-018-9008

Customer service E-mail: dwinhmi@dwin.com.cn

Website: www.dwin-global.com

DWIN Developer Forum: <https://forums.dwin-global.com/index.php/forums>

Thank you all for continuous support of DWIN, and your approval is the driving force of our progress!

Important Disclaimer

DWIN reserves the right to make any changes to product designs without prior notice.

Customers should ensure strictly adhering to all the relevant standards and requirements during the product application process, including but not limited to functional safety, information security, and regulatory provisions. DWIN shall not bear any joint and several liability for any consequences that may arise from customers' adoption of DWIN products. In particular, for risks that may lead to significant property losses, environmental hazards, personal injury, or even death, especially in high-risk application areas such as military applications, flammable and explosive places, and life-saving medical equipment, customers should independently assess the risks and take corresponding preventive and protective measures. DWIN shall not bear any relevant responsibility.