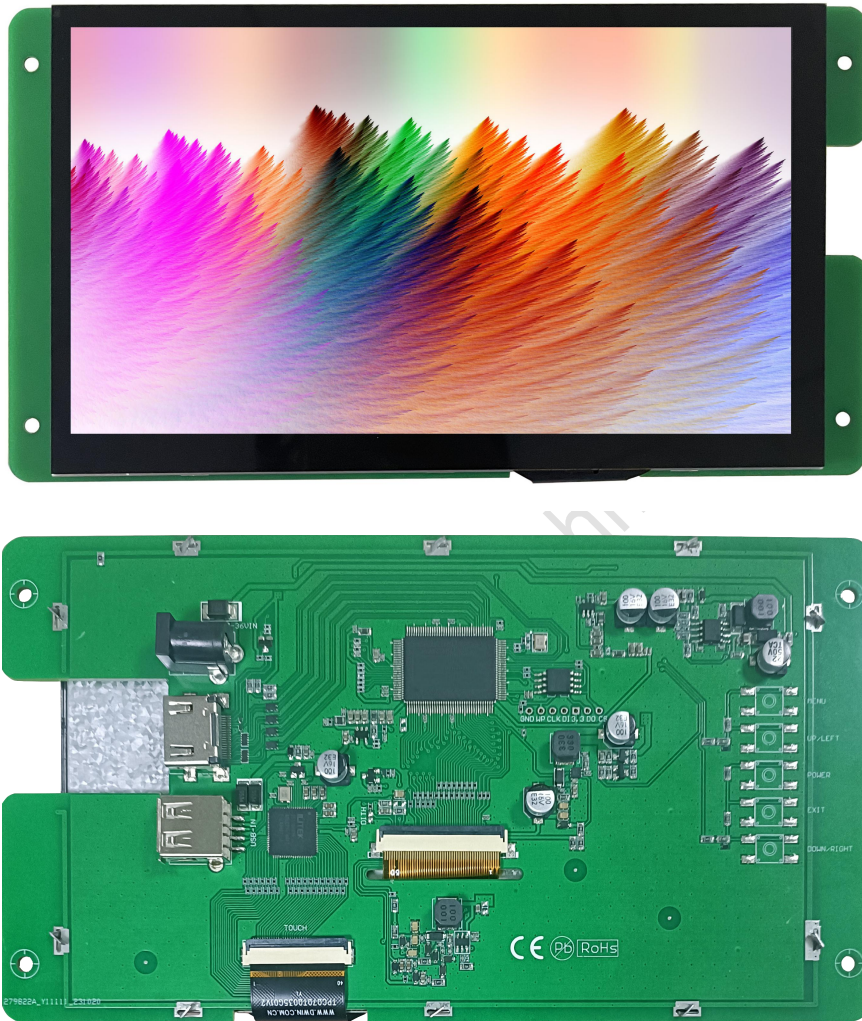


# HDW070\_008LZ04

**7 Inch, 800×RGB×480, 16.7M colors, TN screen, High  
brightness 800nit, Capacitive touch, HDMI interface display**



Note: The physical picture is a left and right flip picture

Disclaimer: The product design is subject to alternation and improvement without prior notice.

## ● Display

Item	Parameter	Description
Color	16.7M(16777216)colors	24 bit color 8R8G8B
Panel Type	TN	TN TFT LCM , normal viewing angle
Viewing Angle	70/70/50/70(L/R/U/D)	-
Active Area (A.A.)	154.08mm(W) * 85.92mm(H)	800*480
Resolution	800*480	Support 0°/90°/180°/270°rotated display
Backlight	LED	≥20000H(Continuous working with maximum brightness, time of the brightness decays to 50%)
Brightness	800nit	-

Note:You can use dynamic screen saver wallpapers to avoid afterimages caused by fixed page display for a long time.

## ● Voltage & Current

Item	Description	
Power Voltage	7~36V, typical value of 12V	
Current Parameters	540mA	VCC=7V (Minimum starting voltage)
	330mA	VCC=12V (Standard supply voltage)
	160mA	VCC=36V (Maximum supply voltage)

Recommended power supply: 12V 1A DC

## ● Reliability Test

Item	Conditions	Min	Typ	Max	Unit
Working Temperature	60%RH at 12V voltage	-20	25	70	℃
Storage Temperature	-	-30	25	80	℃
Working Humidity	25℃	10%	60%	90%	RH

## ● Interface

Item	Description
Socket	Power interface, HDMI interface
USB Interface	Yes (Connect USB Capacitive touch screen)
SD Card Slot	None

## ● Peripheral

Peripheral	Capacitive touch panel
------------	------------------------

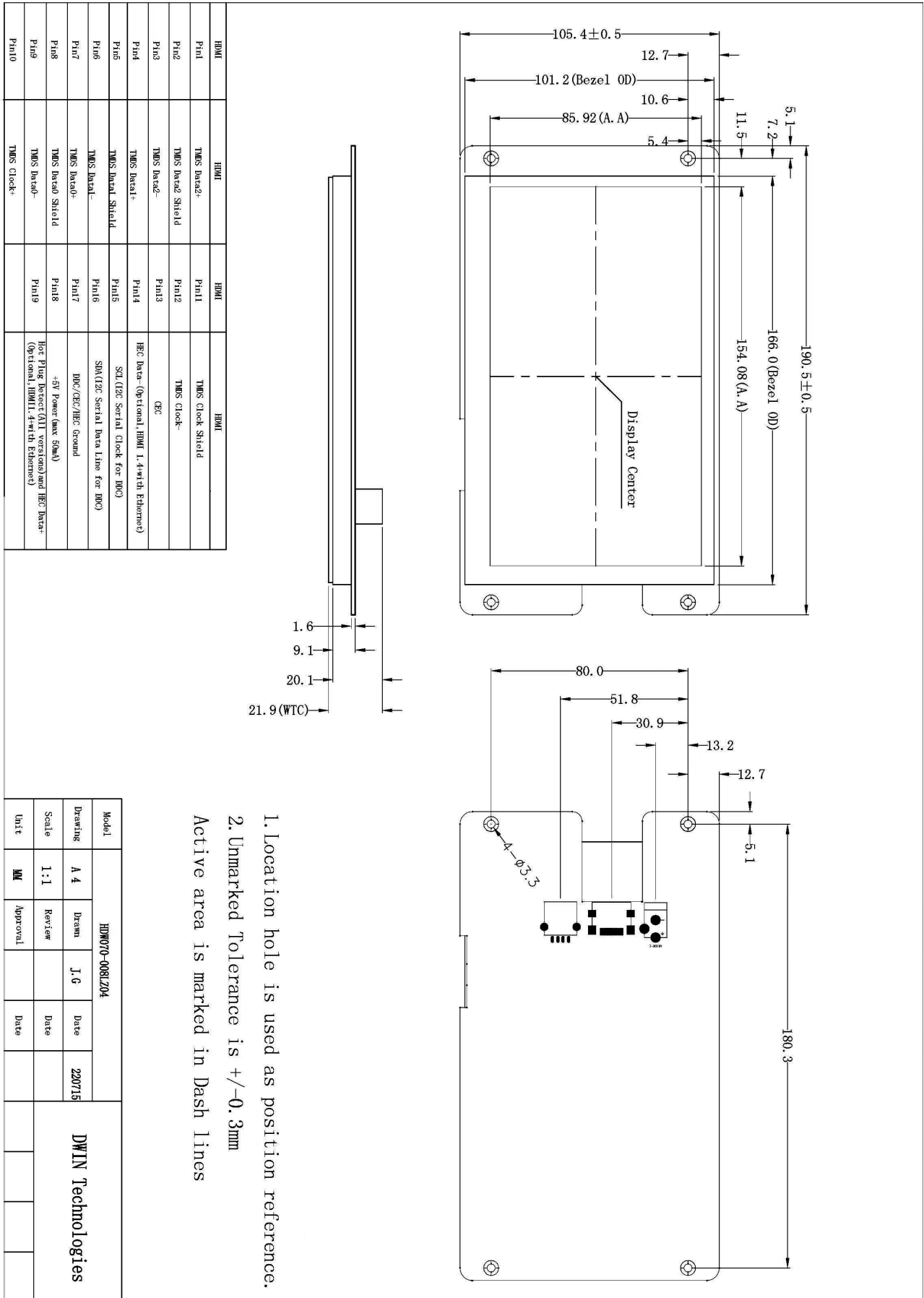
● **Packing Capacity & Dimension**

Dimension				
Dimension	190.5(W)*105.4(H)*21.9(T)mm			
Net Weight	300g			
Packing Capacity				
Model	Size	Layer	Quantity/Layer	Quantity(Pcs)
Carton1:	220mm(L)*160mm(W)*47mm (H)	-	-	-
Carton2:	250mm(L)*200mm(W)*80mm (H)	2	1	2
Carton3:	320mm(L)*270mm(W)*80mm (H)	2	2	4
Carton4:	450mm(L)*350mm(W)*300mm(H)	1	20	20
Carton5:	600mm(L)*450mm(W)*300mm(H)	1	34	34

Disclaimer:

- 1, The product design is subject to alternation and improvement without prior notice.
- 2, There are multiple parallel raw materials coexisting to guarantee the stable supply. If customers have particular raw material preferences or requirements, please contact the sales personnel.

DWIN Technologies Technical Document



1. Location hole is used as position reference.
  2. Unmarked Tolerance is  $\pm 0.3\text{mm}$
- Active area is marked in Dash Lines

Model	HDW070-008LZ04			DWIN Technologies
Drawing	A 4	Drawn	J.G	
Scale	1:1	Review		
Unit	MM	Approval		Date

**Record of Revision**

<b>Ver</b>	<b>Revise Date</b>	<b>Content</b>	<b>Editor</b>
00	2022-12-08	First Edition	Kaya
01	2023-12-04	IC scheme change, update physical image	YML

Please contact us if you have any questions about the use of this document or our products, or if you would like to know the latest information about our products:

Customer service Tel: +86-400-018-9008

Customer service E-mail: [dwinhmi@dwin.com.cn](mailto:dwinhmi@dwin.com.cn)

Website: [www.dwin-global.com](http://www.dwin-global.com)

DWIN Developer Forum: <https://forums.dwin-global.com/index.php/forums>

Thank you all for continuous support of DWIN, and your approval is the driving force of our progress!

**Important Disclaimer**

DWIN reserves the right to make any changes to product designs without prior notice.

Customers should ensure strictly adhering to all the relevant standards and requirements during the product application process, including but not limited to functional safety, information security, and regulatory provisions. DWIN shall not bear any joint and several liability for any consequences that may arise from customers' adoption of DWIN products. In particular, for risks that may lead to significant property losses, environmental hazards, personal injury, or even death, especially in high-risk application areas such as military applications, flammable and explosive places, and life-saving medical equipment, customers should independently assess the risks and take corresponding preventive and protective measures. DWIN shall not bear any relevant responsibility.