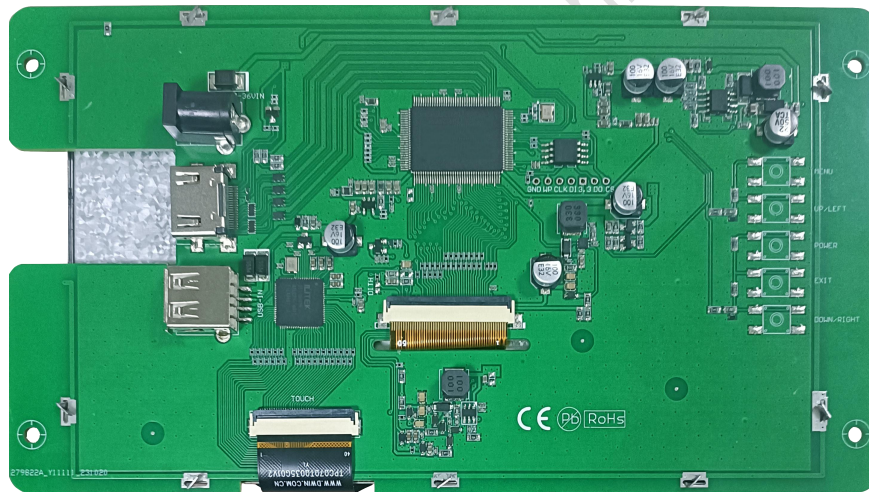


HDW070_008LZ05

**7 Inch, 1024*RGB*600, 16.7M Colors, IPS screen, High
brightness 600nit, Capacitive touch panel, HDMI interface display**



Note: The physical picture is a left and right flip picture.

Disclaimer: The product design is subject to alternation and improvement without prior notice.

● Display

Item	Parameter	Description
Color	16.7M(16777216)colors	24 bit color 8R8G8B
Panel Type	IPS	IPS TFT LCM, wide viewing angle
Viewing Angle	85/85/85/85 (L/R/U/D)	Best View: symmetrical
Active Area(A.A.)	154.08mm(W) * 85.92mm(H)	1024*600
Resolution	1024*600	Support 0°/90°/180°/270°rotated display
Backlight	LED	≥20000H (Continuous working with maximum brightness, time of the brightness decays to 50%)
Brightness	600nit	-

Note: You can use dynamic screen saver wallpapers to avoid afterimages caused by fixed page display for a long time.

● Voltage & Current

Item	Description	
Power Voltage	7~36V, typical value of 12V	
Current Parameters	600mA	VCC=7V(Minimum starting voltage)
	370mA	VCC=12V (Standard supply voltage)
	170mA	VCC=36V (Maximum supply voltage)

Recommended power supply: 12V 1A DC

● Reliability Test

Item	Conditions	Min	Typ	Max	Unit
Working Temperature	60%RH at 12V voltage	-20	25	70	°C
Storage Temperature	-	-30	25	80	°C
Working Humidity	25°C	10%	60%	90%	RH

● Interface

Item	Description
Socket	Power interface, HDMI interface
USB Interface	Yes (Connect USB Capacitive touch screen)
SD Card Slot	None

● Peripheral

Peripheral	Capacitive touch panel
------------	------------------------

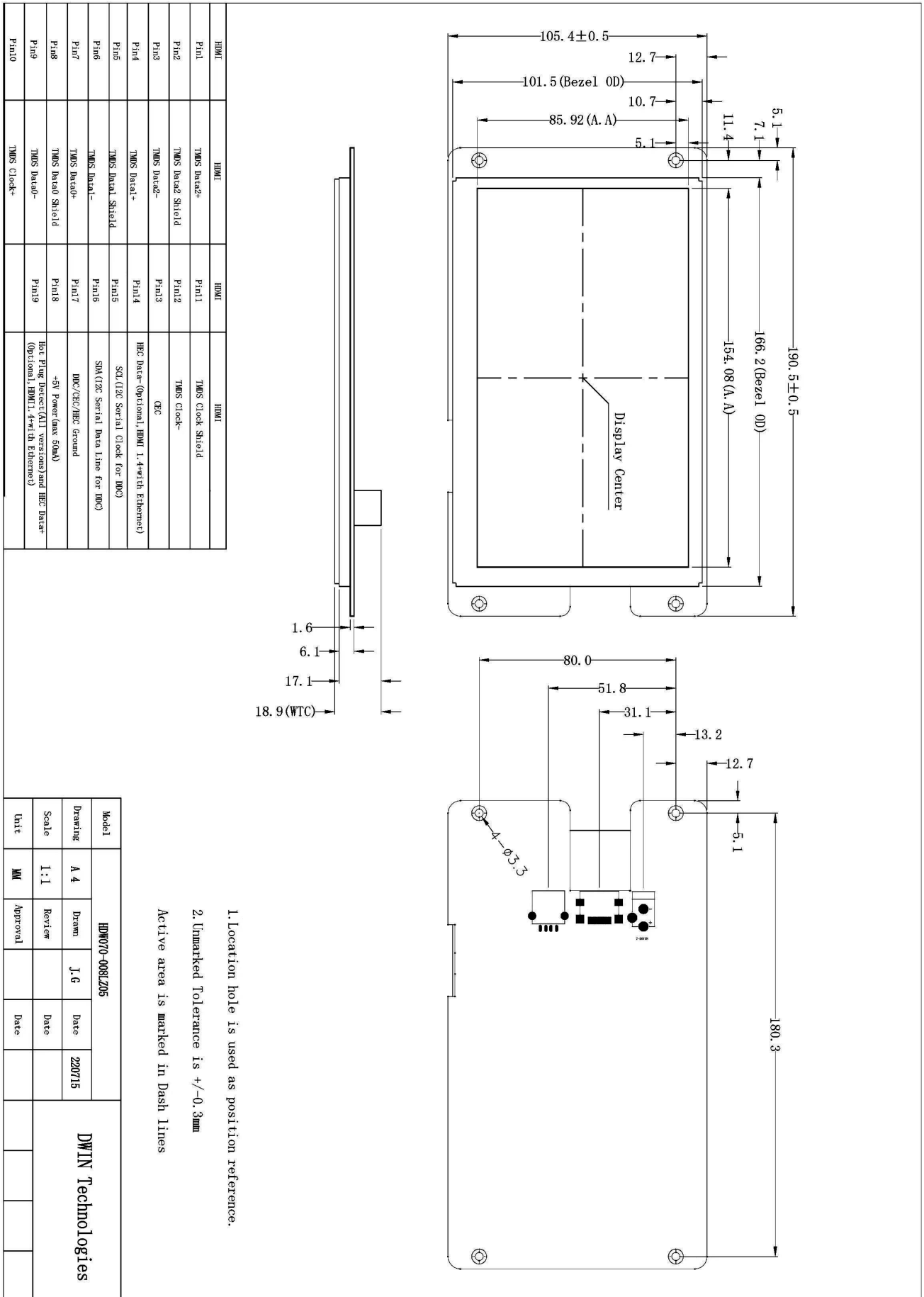
● **Packing Capacity & Dimension**

Dimension				
Dimension	190.5(W)*105.4(H)*18.9(T)mm			
Net Weight	250g			
Packing Capacity				
Model	Size	Layer	Quantity/Layer	Quantity(Pcs)
Carton1:	220mm(L)*160mm(W)*47mm(H)	-	-	-
Carton2:	250mm(L)*200mm(W)*80mm(H)	2	1	2
Carton3:	320mm(L)*270mm(W)*80mm(H)	2	2	4
Carton4:	450mm(L)*350mm(W)*300mm(H)	1	20	20
Carton5:	600mm(L)*450mm(W)*300mm(H)	1	34	34

Disclaimer:

- 1, The product design is subject to alternation and improvement without prior notice.
- 2, There are multiple parallel raw materials coexisting to guarantee the stable supply.If customers have particular raw material preferences or requirements, please contact the sales personnel.

DWIN Technologies Technical Document



Record of Revision

Ver	Revise Date	Content	Editor
00	2022-12-08	First Edition	Kaya
01	2023-12-04	IC scheme change, update physical image	YML

Please contact us if you have any questions about the use of this document or our products, or if you would like to know the latest information about our products:

Customer service Tel: +86-400-018-9008

Customer service E-mail: dwinhmi@dwin.com.cn

Website: www.dwin-global.com

DWIN Developer Forum: <https://forums.dwin-global.com/index.php/forums>

Thank you all for continuous support of DWIN, and your approval is the driving force of our progress!

Important Disclaimer

DWIN reserves the right to make any changes to product designs without prior notice.

Customers should ensure strictly adhering to all the relevant standards and requirements during the product application process, including but not limited to functional safety, information security, and regulatory provisions. DWIN shall not bear any joint and several liability for any consequences that may arise from customers' adoption of DWIN products. In particular, for risks that may lead to significant property losses, environmental hazards, personal injury, or even death, especially in high-risk application areas such as military applications, flammable and explosive places, and life-saving medical equipment, customers should independently assess the risks and take corresponding preventive and protective measures. DWIN shall not bear any relevant responsibility.