



WINSTAR Display Co.,Ltd.
華凌光電股份有限公司

SPECIFICATION

MODEL NO. : WLOF00101000JGAACSA00

Summary

10.1 Inch Smart Display (Custom CAN ID series) Features

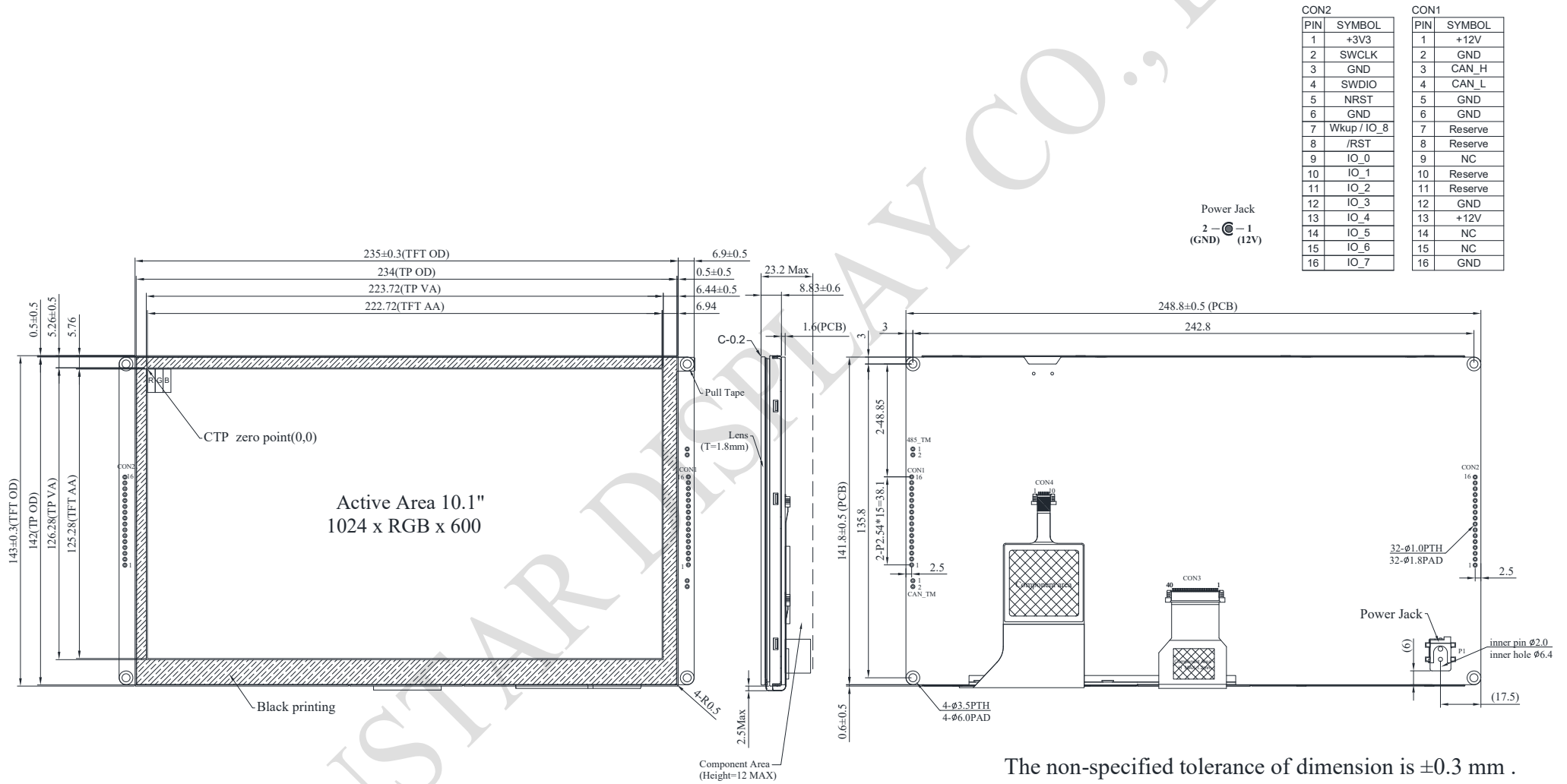
1. +12V power supply input, the power consumption is around 6W.
2. Self testing after booting function.
3. CAN bus communication interface.
4. Supports Custom CAN ID protocol. Default baud rate is at 250KB.
5. Built in flash memory, store the font and Object Dictionary Data.
6. Support capacitive touch panel (PCAP).
7. Embedded buzzer controlled by Master Device.
8. Demo set HOST can be used on multiple platforms, such as Computer (with USB to CAN Dongle), MCU, Raspberry Pi (with PiCAN2).

Product information

General information

Item	Standard Value	Unit
Operating voltage	8V~28V dynamic	Vdc
Communication Interface	CAN bus differential ± 3.3	Vpp
MCU	STM32F746	N/A
Flash Memory	16	MB
SDRAM Frequency	166	MHz
LCD display size	10.1	inch
Dot Matrix	1024 x RGBx600(TFT)	dot
Module dimension	235(W) x 143(H) x 8.78(D)	mm
Active Area	222.72 (H) x 125.28(V)	mm
Dot pitch	0.2175(W) x 0.2088(H)	mm
Brightness	Min : 300 ; Typ : 400	
LCD Type	LED, Normally White	
View Direction	85/85/85/85	
Aspect Ratio	16:9	
Touch Panel	Projected Capacitive Touch Panel (PCAP)	
Surface	Glare	

Contour Drawing



The non-specified tolerance of dimension is ±0.3 mm .

Absolute Maximum Ratings

Item	Symbol	Min	Typ	Max	Unit
Operating Temperature	TOP	-20	—	+70	°C
Storage Temperature	TST	-30	—	+80	°C

Electrical Characteristics

Item	Symbol	Condition	Min	Typ	Max	Unit
Supply Voltage	VCC	—	8	12	28	V
Supply LCM current	I(mA)	-	-	530	-	mA

BOM

Item	Description
LCM	WF101JTYAHLNB0#
PCBA	SV10010R100JB00N0100

Interface

CON1 definition

Pin	Symbol	Function
1	+12V	Power supply12V input
2	GND	Power supply GND input
3	CAN_H	CAN bus D+
4	CAN_L	CAN bus D-
5	GND	Power supply GND input
6	GND	Power supply GND input
7	Reserve	USB_D-
8	Reserve	USB_D+
9	NC	-
10	Reserve	USART RX interface(Reserve)
11	Reserve	USART TX interface(Reserve)
12	GND	Power supply GND input
13	+12V	Power supply12V input
14	NC	-
15	NC	-
16	GND	Power supply GND input

CON2 definition

Pin	Symbol	Function
1	VDD3V	3.3V power for JTAG interface
2	JTAG_SWCLK	CLK pin for JTAG interface
3	GND	GND for JTAG interface
4	JTAG_SWDIO	Data pin for JTAG interface
5	NRST	Reset pin for JTAG interface
6	GND	GND
7	Wkup/ IO_8	(PA0) for system Resume from suspend (Reserve)
8	/RST	Reset (active Low)
9	IO_0	ADC,DAC,Timer,Event,I/O
10	IO_1	ADC,Timer,Event,I/O
11	IO_2	ADC,Timer,Event,I/O
12	IO_3	RST,Timer,Event,I/O
13	IO_4	RST,Timer,Event,I/O
14	IO_5	ADC,Timer,Event,I/O
15	IO_6	RST,Timer,Event,I/O
16	IO_7	RST,ADC,Event,I/O