



WINSTAR Display Co.,Ltd.
華凌光電股份有限公司



SPECIFICATION

MODEL NO. : WLOF00101000JGDABSA00

Summary

10.1 Inch Smart Display (RS485 series) Features

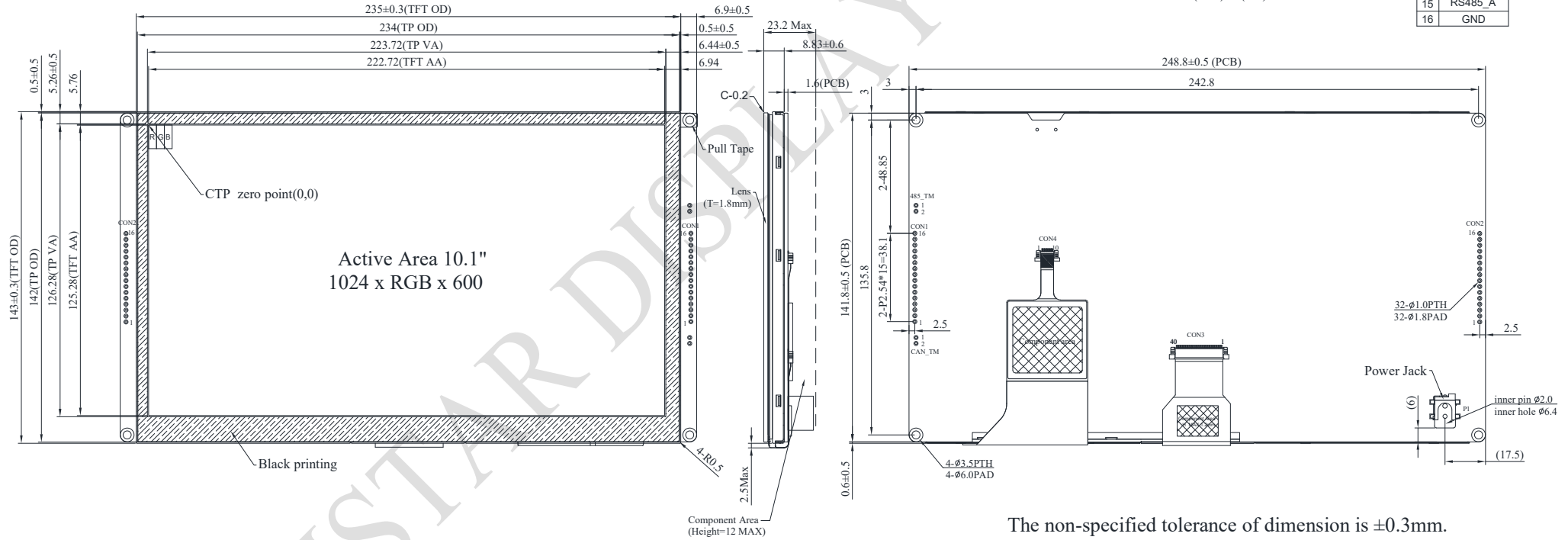
1. +12V power supply input with 8V to 28V dynamic range power input, the power consumption is around 6 Watt.
2. Self testing after booting function.
3. RS485 communication interface.
4. Built in 16MB flash memory, store the font and Object Dictionary Data.
5. Support capacitive touch panel (CTP).
6. Embedded buzzer controlled by Master Device.
7. HOST can be used on multiple platforms, such as Computer (with USB to RS-485 Dongle), MCU.

Product information

General information

Item	Standard Value	Unit
Operating voltage	8V~28V dynamic	Vdc
Communication Interface	RS485	Vpp
MCU	STM32F746	N/A
Flash Memory	16	MB
LCD display size	10.1	inch
Dot Matrix	1024 x RGB x 600(TFT)	dot
Module dimension	235(W) x 143(H) x 8.78(D)	mm
Active area	222.72 (H) x 125.28(V)	mm
Dot pitch	0.2175(W) x 0.2088(H)	mm
Brightness	Min: 300; Typ: 400	
LCD type	LED, Normally White	
View Direction	85/85/85/85	
Aspect Ratio	16:9	
Touch Panel	Capacitive Touch Panel	
Surface	Glare	

Contour Drawing



The non-specified tolerance of dimension is ±0.3mm.

Absolute Maximum Ratings

Item	Symbol	Min	Typ	Max	Unit
Operating Temperature	TOP	-20	—	+70	°C
Storage Temperature	TST	-30	—	+80	°C

Electrical Characteristics

Item	Symbol	Condition	Min	Typ	Max	Unit
Supply Voltage	VCC	—	8	12	28	V
Supply LCM current	I(mA)	-	-	510	-	mA
I/O pin Voltage	--	--	--	3.3	V	

BOM

Item	Description
LCM	WF101JTYAHLNB0#
PCBA	SV10010R100JB00N0101

Interface

CON1 definition:

Pin	Symbol	Function	Remark
1	VIN	Power supply 8V to 28V input	Input
2	GND	Power supply GND input	Input
3	NC	-	-
4	NC	-	-
5	GND	Power supply GND input	GND
6	GND	Power supply GND input	GND
7	Reserve	USB_D-	Reserve
8	Reserve	USB_D+	Reserve
9	NC	-	-
10	Reserve	USART RX interface(Reserve)	Reserve
11	Reserve	USART TX interface(Reserve)	Reserve
12	GND	Power supply GND input	GND
13	VIN	Power supply 8V to 28V input	Input
14	RS485_B	RS485 D-	I/O
15	RS485_A	RS485 D+	I/O
16	GND	Power supply GND input	Input

CON2 definition:

Pin	Symbol	Function	Remark
1	+3V3	3.3V power for JTAG interface	Output
2	SWCLK	CLK pin for JTAG interface	Input
3	GND	GND for JTAG interface	Output
4	SWDIO	Data pin for JTAG interface	I/O
5	NRST	Reset pin for JTAG interface	Input
6	GND	GND	Output
7	Reserve	IO_8 for system Resume from suspend (Reserve)	WKup,ADC,Timer,Event,I/O
8	Reserve	Reset (active Low) (Reserve)	I
9	Reserve	IO_0 (Reserve)	ADC,DAC,Timer,Event,I/O
10	Reserve	IO_1 (Reserve)	ADC,Timer,Event,I/O
11	Reserve	IO_2 (Reserve)	ADC,Timer,Event,I/O
12	Reserve	IO_3 (Reserve)	RST,Timer,Event,I/O
13	Reserve	IO_4 (Reserve)	RST,Timer,Event,I/O
14	Reserve	IO_5 (Reserve)	ADC,Timer,Event,I/O
15	Reserve	IO_6 (Reserve)	RST,Timer,Event,I/O
16	Reserve	IO_7 (Reserve)	RST,ADC,Event,I/O