



## ACeP Introduction

IoT2 | 2019.4.11

The "Creativity on Display" logo is positioned in the upper left of a graphic. The logo consists of the words "Creativity" and "Display" in a black, sans-serif font, with the word "on" in a smaller font size and a red dot above it. To the right of the logo is a graphic of a grey surface with several colorful sticky notes (red, yellow, blue, green, brown) and white markers, suggesting a creative or collaborative workspace.

Creativity  
on  
Display<sup>SM</sup>

# Potential Applications



- Battery operation, no wire,
- Painting-like display quality
- No backlight, No Blue Ray Hazard

# ACeP Panel Preliminary Performance

Item	Detail	Typical
Nominal Color Gamut	Volume	~60k
Color Performance (L*, a*, b*)	R	(39, 22, 17)
	G	(47, -20, 16)
	B	(30, 12, -23)
	C	(44, -9, -10)
	M	(41, 30, -7)
	Y	(60, -7, 39)
	K	22 L*
	W	66 L*
Contrast Ratio	KW	≥ 10
Transition time	Image to Image	≤25s
Operating Temperature Range	°C	15°C to 35°C
Storage Temperature Range	°C	-20°C to 50°C
Power Consumption	EPD with Tcon	TBD

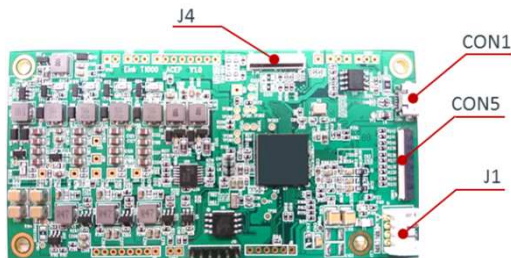
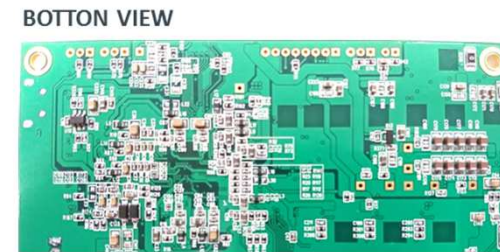
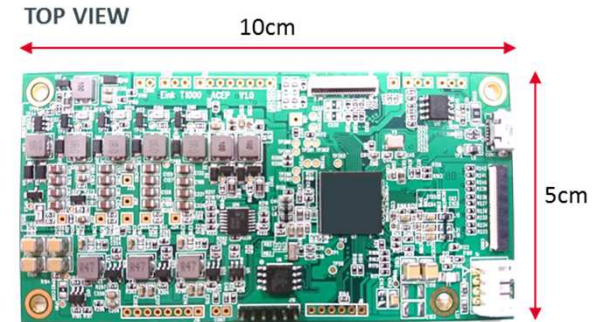
※This is the preliminary performance of ACeP and is subjected to change.

※Performance values at 22.5 °C ambient



# ACeP t-con module Preliminary Specification

Name	Description
TCON	E Ink T1000
RAM	Embedded 64MB
Flash Memory	External 16MB
Display Interface	TTL/FPC Connector
Debug Interface	UART
Host Interface	USB Port (micro USB)
Power Adapter	DC +5V/3~4A
Dimension	50mm x100mm
Operating Temperature	0~40 degree



J1: Power connector  
 J4: EPD connector  
 CON1: micro USB  
 CON5: MIPI connector

## 13.3 ACeP Business Type and Package

Type	ACeP Panel P/N	T-con module P/N	CRA	Note
A	AC133UT1C1-ZZ	-	SAL co-dev.	<ul style="list-style-type: none"> <li>- E Ink will release T-con Reference Design.</li> <li>- Targeted ODM customers</li> <li>- E Ink sell panel only.</li> </ul>
B	AC133UT1C1-ZZ	0171-21D00168	SLA co-dev.	<ul style="list-style-type: none"> <li>- For System integrators or OEM customers</li> <li>- E Ink provide panel with t-con.</li> </ul>
C	AC133UT1C1-ZZ	0171-21D00166	N/A	<ul style="list-style-type: none"> <li>- For distributors, design house, end-user for evaluation purpose.</li> <li>- E Ink sell panel with t-con, bootable SD card for Rs-Pi and necessary cables.</li> <li>- Rs-Pi purchased from below link</li> </ul>

Raspberry Pi #3, available on Digi-Key website :

<https://www.digikey.tw/product-detail/en/raspberry-pi/RASPBERRY-PI-3/1690-1000-ND/6152799?cur=TWD&lang=en>

# 13.3 ACeP Type C Packaging

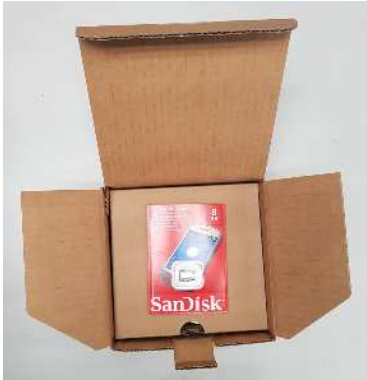
## Type C t-con module packaging



T-con module BOX



T-con module



Bootable SD card



USB cable, power cable



Creativity **on**  
Display

Thank You

[www.eink.com](http://www.eink.com)

E Ink is the originator, pioneer & commercial leader in ePaper technology