



SSD1515

15.9" Resizing LCD, 1000 nits LED backlight, 1280x512 ultra wide aspect ratio 16:6.4

SSD1515 is an innovative ultra-wide, sunlight readable, LED backlight LCD display. It provides LCD panel with specific ratios for digital signage, public transportation, exhibition hall, department store, vending machine and industrial applications. Incorporating with A.D. control board and backlight design, it is high brightness and sunlight readable panel, can display high-quality video with energy-efficient.

Key Features

- Resizing LCD
- Ultra Wide Screen (16 : 6.4)
- Sunlight Readable
- LED Backlight
- High Brightness 1000 nits
- Low Power Consumption
- High Uniformity (90%)
- Wide Dimming
- Life Expectancy (70,000hrs)
- Slim Bezel



Specifications

V1

Model No.	SSD1515
Description	15.9" Resizing LCD, 1000 nits LED backlight, 1280x512
Display Area	376.3 x 150.5 mm
Brightness	1,000 cd/m ²
Resolution	1280 x 512
Aspect Ratio	16 : 6.4
Contrast Ratio	1000:1
Pixel Pitch (mm)	0.294 x 0.294
Viewing Angle	+80°~ -80°(H), +85°~ -85°(V)
Display Colors	16.7M
Response Time (Typical)	5 ms
Sync	LVDS
Power Consumption	23W
Dimensions (mm)	398.4 x 176.2 x 52.7
Weight (Net)	2.5 Kg
LED Driving Board	LID15A04
Control Board (Optional)	AD2662GD / AD2662GDVAR
<input type="checkbox"/> AD2662GD	VGA + DVI
<input type="checkbox"/> AD2662GDVAR	VGA + DVI (Optional AV / S-Video / Component / Audio)
<input type="checkbox"/> Others	
F / R Control Button	5 Key / 4 Key
<input type="checkbox"/> 4 Key	Power Switch, Menu, Select (+, -),
<input type="checkbox"/> 5 Key	Power Switch, Menu, Select (+, -), Auto
OSD Menu	Brightness, Contrast, H/V Position, Color, Phase, Clock...
Optional	<input type="checkbox"/> AOT <input type="checkbox"/> Touch Screen

Specifications are subject to change without notice.

All brands or product names are trademarks or registered trademarks of their respective companies.

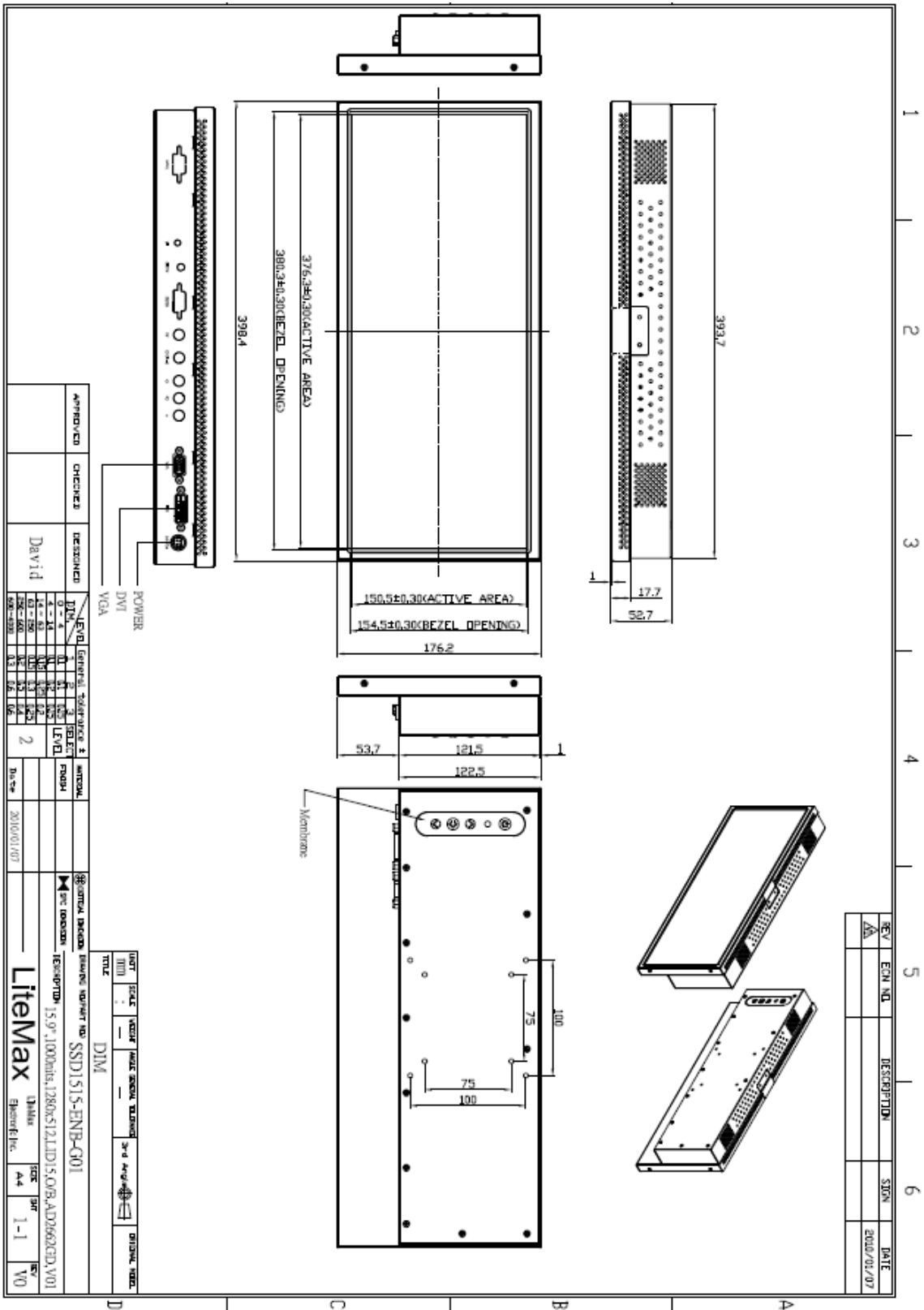
SSD = Panel + LED Driving Board + Control Board



Mechanical Drawing

Outline Dimensions

unit:mm





Ordering Information

Model Name	Description
SSD1515-ENB-G01	15.9",1000nits,1280*512,LID15.O/B,AD2662GD,V01

Optional Accessories

Part Number	Description
980000460010	SET.OTHER,ADAPTER REWORK.60W PAA060F WITH.POWER DIN 4pin lock,P
810618301010 (Optional)	CABLE.POWER.AC.1830mm.(US Type).3PIN PLUG TO SOCKET.SVT(SPT-2)18AWG 3C BLACK,P.
810618301090 (Optional)	CABLE,POWER,AC,1830mm.(EU Type) 3PIN PLUG TO.SOCKET,H05VV-F 3G.0.75MMSQ BLACK,P
810618301050 (Optional)	CABLE,POWER,AC,1830mm.UK(FUSE) 3PIN PLUG TO.SOCKET,H05VV-F 3C(3G) 0.75MMSQ BLACK,P
810618301170 (Optional)	CABLE.POWER,AC,1830mm. (AU Type) 3PIN PLUG TO 2P SOCKET.LTSA 0.75MMSQ BLACK,P
810618301030 (Optional)	CABLE.POWER.AC.1830mm.(JP Type).2PIN PLUG Y TERMINAL TO. SOCKET.VCTF 3C 0.75MMSQ BLACK,P