



iN1

Industrial Level Scanning Engine



The iN1 scanner is specifically designed to scan barcodes that have been directly marked onto a product (DPM, direct part marking). Using advanced technology, the iN1 demonstrates great reading capabilities for these types of barcodes.

The DPM barcodes usually come as the dot matrix, ink jet printing or laser etched marking. And the DPM barcodes usually are in low contrast, low definition, or ultra-small size(e.g.:2mm),etc.

! **Industrial DPM Decoding**

Able to read the DPM barcodes with low contrast,with reflection,ultra-small size, dot matrix barcodes,etc;

! **Dual Core CPU Processor**

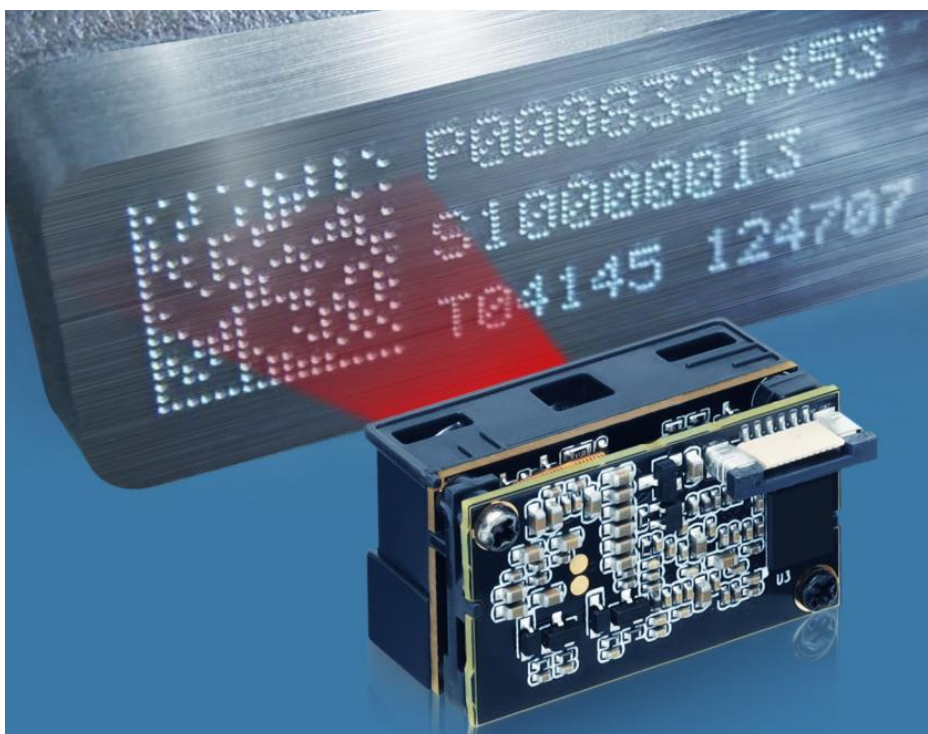
Dual core CPU processor for a faster decoding speed;

! **Cross Laser Aiming, dual Color intelligent switching**

Intelligent switching between the red and the white illuminations for a faster scanning and better capturing;

! **Megapixel,enable to deal with complicated application scenarios**

1296\*816 CMOS



## Specification:

<b>Performance</b>	Image Sensor	1296*816 CMOS		
	Illumination/ Aiming	White and Red LED lights/ Laser Cross aimer		
	Symbology	2D	Micro PDF417,PDF417, QR Code, Micro QR, Aztec, Data Matrix, Grid Matrix, etc	
		1D	Code32,Code 39,Code 93, Code128,EAN-13, EAN-8,UPC-A, UPC-E, IATA 2 of 5, Interleaved 2 of 5, Codabar,Coda 11, Coda 128, Matrix 2 of 5, Straight 2 of 5, MSI/Plessey,GS1 Data Bar,etc.	
	Precision	≥3.3mil		
	Typical Depth of Field	Code 128	45-110mm (3.3mil)	
		Code 128	40-200mm (10.83mil)	
		Code 128	60-270mm (20mil)	
		QR Code	60-280mm (20mil)	
	Scan Mode	Sense mode, Continuous mode, Command trigger		
	Scan Angle	Roll: 360°, Skew:±60°, Pitch: ±75°		
	Field of View	Horizontal 48.7°, Vertical 28°		
Min. Print Contrast	20%			
<b>Mechanical/ Electric</b>	Interface	TTL-232; USB		
	Dimensions	30(W)×17(D)×19.5(H) mm (max.)		
	Weight	8.4g		
	Notification	Beep, LED indicator		
	Operating Voltage	3.3VDC±5%		
	Power	Peak: 2W; Rated power consumption: 460mW(typical value).		
	Current @ 3.3VDC	Peak:600mA; Typical:140mA; Idle:58mA.		
<b>Environmental</b>	Operating Temperature	-20°C to 50°C		
	Storage Temperature	-40°C to 70°C		
	Humidity	5% to 95% (non-condensing)		
	Ambient light Immunity	0~100000 LUX		
<b>Accessories (optional)</b>	Development kit board:	USB	USB virtual Com or USB-HID; equipped with a trigger button, beeper and USB interfaces.	



Tel: +86 755-23762089



Website: [www.rtscan.net](http://www.rtscan.net) Email: [info@rtscan.net](mailto:info@rtscan.net)

553-555, Dongming Building, Minzhi Street, Longhua District, Shenzhen 518109, China

Copyright RTScan Technology Limited all rights reserved. RTScan is a registered trademark of RTScan Technology Limited. All other trademarks are the property of their respective owners. In a continuing effort to improve our products, RTScan Technology Limited reserves the right to change specifications and features without prior notice.

RTSCAN